

Staying Connected

Building Awareness

Developing Knowledge



1 **Fillers, Putties & Glazes**

2 **Primers & Clears**

3 **RAPTOR Part I**

4 **RAPTOR Part II**

5 **Premium Aerosols**

6 **Custom Cans**

Module 4: RAPTOR The Application



Fillers



Primers and Clears



RAPTOR



Aerosols

Module 4: RAPTOR

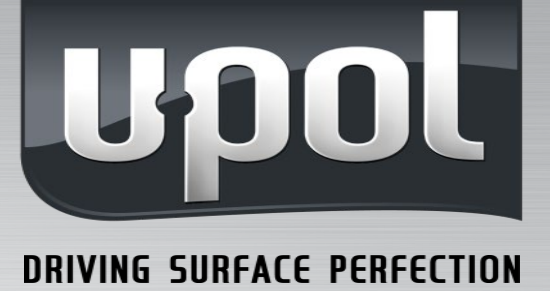
The Application



Essential Steps For A Successful Project

- Clean Surface – wash with soap and water, follow up with degreaser
- Sand surface with 120 – 180 grit, red scuff pad in hard to reach areas
- Re-clean with degreaser
- Spot prime small bare metal areas w/ Raptor Etch Prime
- Large bare metal areas prime with 2K epoxy aerosol
- Prime hard to sand areas and plastics w/ Raptor Adhesion Promoter

Module 4: RAPTOR The Application



**UP0726
Standard Gun**



**UP4880 Vari-
Nozzle Pro Gun**



UP5028 Rollers



**Disposable Liners
& HVLP Guns**

Module 4: RAPTOR The Application



Tinting Raptor – the options

- Two methods for tinting Raptor:
- Tint pouches - 15 colors highly pigmented toners that are RAL standard colors
- Custom tint any color with automotive base coat toners.
- Follow up video

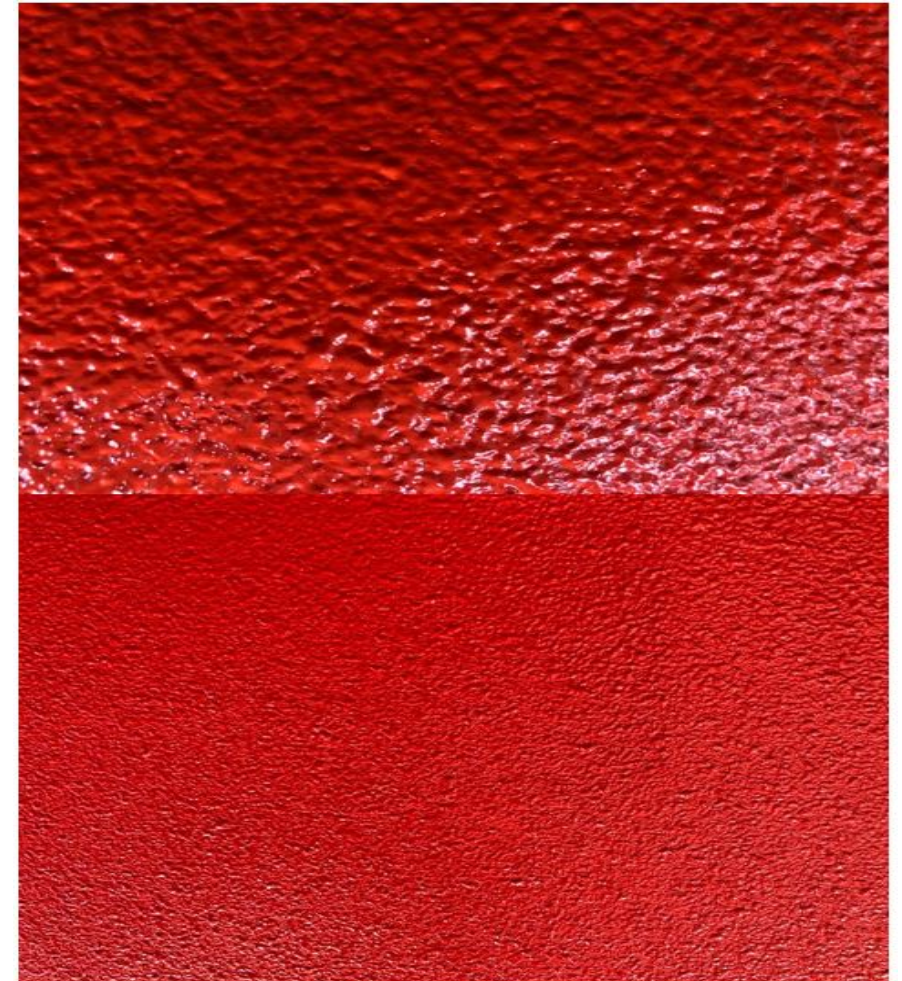


Module 4: RAPTOR The Application



Various Pressure, Textures, Wood and Drop Coat

- Different textures
 - how to achieve
- Application on wood
 - a common question on trailers
 - how to prep and apply
- Review the two different textures
- Striping
 - what causes it
 - The drop coat how to fix it
- Follow up video



Module 4: RAPTOR The Application



Fender Applications

- Following video covers application technique with UP0726 (coarse) and HVLP (finer) spray equipment
- Covers surface sanding prep
- Acid 8 to burn through areas
- Epoxy application on larger areas
- Applying with 0726 (coarser)
- Applying with HVLP (finer)
 - For exteriors – easier cleaning
- Striping
- Drop coat application

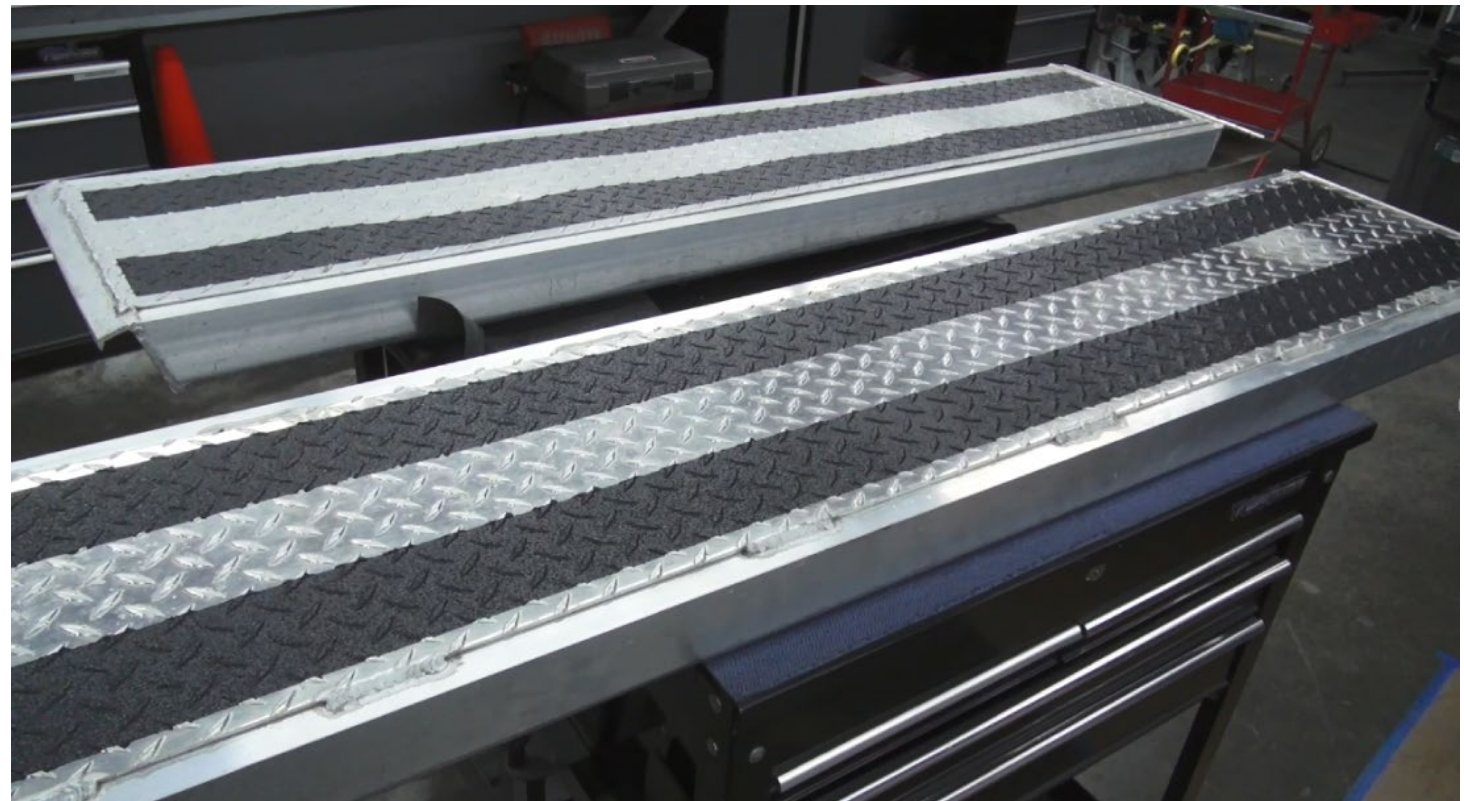


Module 4: RAPTOR The Application



Roll On Application – Running Boards

- Taping / Masking
- Surface prep
- Priming
- Rolling Raptor



Module 4: RAPTOR The Application



2K Aerosol Application

RAPTOR 2k Aerosol

Same 2K Raptor

Available in 7 colors

Activation and use

14.5 sq ft coverage – perfect for:

- Bumper texture
- Rockers / Trim
- Wheel coating
- Small component coating
- Repair existing Raptor
- High output tip – multiple textures
- Follow up video



Module 4: RAPTOR The Application



Common Application Errors

- Inadequate surface cleaning, sanding or poor priming of bare metal leads to loss of adhesion and peeling.
- Too many coats too fast or insufficient flash time leads to bubbling, “mud cracking” or splitting as trapped solvents expand



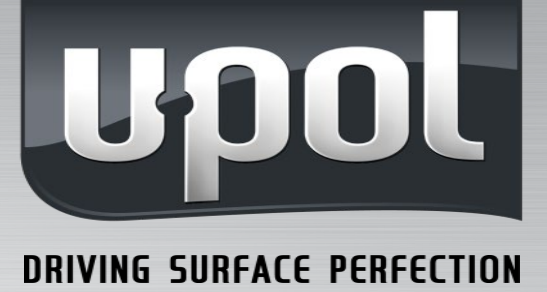
RAPTOR Truck Bed Examples



RAPTOR Truck Bed Examples



RAPTOR Full Body Examples



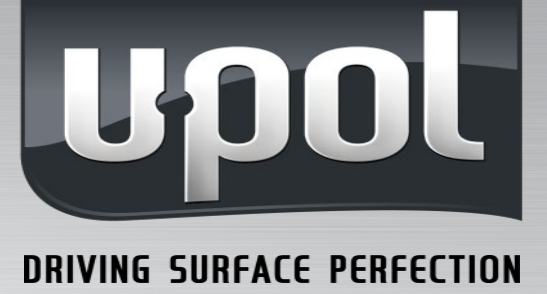
RAPTOR

Full Body Examples



RAPTOR

Full Body Examples



RAPTOR

Trim and Wheels



DRIVING SURFACE PERFECTION



RAPTOR

The Application Family



RAPTOR FAMILY SUMMARY

- U-POL #1 product globally
- Easy to use - Fill / Shake / Shoot
- 3 Versions: black, white, tintable
- 3 VOC levels: NR, 2.6, 1.7
- 1K and 2K Aerosols
- Tint w/ U-POL tints or auto paints
- Spray or roll to achieve textures
- Auto / Marine / Commercial uses

