



DRIVING SURFACE PERFECTION™



**US COLLISION REPAIR
CATALOG**



DRIVING SURFACE PERFECTION™

U-POL IS A WORLD LEADER IN AUTOMOTIVE REFINISHING PRODUCTS SPECIALIZING IN FILLERS, COATINGS, AEROSOLS, ADHESIVES AND PAINT RELATED PRODUCTS WITH SALES IN OVER 100 COUNTRIES...

In 2018, we proudly celebrated 70 years in the automotive industry. U-POL was the first company to develop and produce pre-mixed fillers and today we're still committed to consistently providing the highest quality products that professional technicians demand. We know how much your reputation matters which is why U-POL is investing in future innovation and state of the art manufacturing facilities to help ensure your team get it right first time, every time.



DID YOU KNOW?

- **U-POL** Corporate Headquarters is located in London, England with over 4 acres of manufacturing facilities in Wellingborough, England.
- **U-POL** products are all produced with high quality European resins.
- **U-POL** has 13 offices and 5 distribution centers worldwide.



U-POL products are designed and developed for today's professional technicians. Our products are developed to improve bodyshop efficiency and ensure a great result the first time, every time.

CONNECT WITH US

Quick access to our Safety Data Sheets and Technical Data Sheets is available by visiting our website.

www.u-pol.com

Check out our YouTube channel for product information, process videos and technical tips.

www.youtube.com/U-POLDSP



U-POL PRODUCTS GIVE UNRIVALED RESULTS FOR ALL STAGES OF THE REPAIR PROCESS



DRIVING SURFACE PERFECTION™

FILLERS

PAGE 6 - 9

U-POL offers a comprehensive line of body fillers that streamline repairs with simple to use and easy sanding products. To satisfy bodyshop demand for quality and performance, our lines utilize the latest advancements in resin technology to give the perfect finish first time, every time.



SPECIALTY FILLERS & SEALANTS

PAGE 10 - 12

U-POL specialty fillers are formulated for specific applications where an all-purpose filler just won't do. Each product has been put through extensive real-world testing to ensure you have the right product for the right job.



AEROSOLS

PAGE 13 - 17

U-POL offers a comprehensive line of aerosols ideal for spot/panel and SMART applications. Special clog-free nozzles give a spray gun like finish to every job.



COATINGS

PAGE 18 - 22

Made from the highest quality European resins, U-POL coatings offer superior performance in a range of formulations to suit a variety of body shop conditions and specialized applications. The broad System 20 line, which covers both National Rule and VOC requirements, as well as the fast drying Rapid System Primer are available.



ANCILLARIES

REDUCERS

PAGE 23 - 24



RAPTOR COATINGS

PAGE 26 - 43

RAPTOR is a tough and tintable protective coating that provides surfaces with a protective barrier to withstand the toughest situations. Spray or roll on RAPTOR as a truck bed liner or use to protect industrial surfaces, marine and off-road vehicles and much more.



U-POL BODY FILLERS

U-POL offers a comprehensive line of fillers that offer both quality and performance. Our lines utilize the latest advancements in resin technology to give perfect results every time.



DOLPHIN ONE FILL ALL-IN-ONE PREMIUM BODY FILLER

Skip the glaze and get straight to priming and painting in 20 minutes flat.

One Fill's intelligent micro-sphere technology formula builds and has vertical hold like body filler yet is super smooth and pinhole free like glaze. Industry leading adhesion means you don't have to think about which filler to choose - you can trust that One Fill adheres to nearly any automotive substrate and does it better than the competition. One Fill sands to a super fine powder that won't clog your sandpaper and featheredgedges with no lifting.



DOLPHIN FILLER RANGE



Dolphin™ Speed Filler Premium Fast Curing Filler

Dolphin Speed Filler is an advanced, premium lightweight, ultra-fast curing filler for medium to deep panel repairs. Using "Snap Cure" technology, Dolphin Speed Filler is ready to sand in half the time of standard filler. Offers a process system with Dolphin Speed Glaze to reduce total curing time by up to 26 minutes or 65%.

- Over 2X faster curing (8-10 minutes at 70°F)
- Supports Bodyshop cycle time reduction
- Exceptional sanding properties
- Tack free and pinhole resistant

CODE	SIZE	COLOR	CASE
UP0653	3L Tin	Blue	4



Dolphin™ 1K Combination Putty Ultra Smooth Acrylic Putty

Dolphin 1K Combination Putty is convenient and ready to use - no hardener required! Perfect for surface imperfections and rock chips, especially last minute situations.

- Extra smooth acrylic putty to fill surface imperfections and pinholes
- Designed for use immediately prior to the application of a basecoat or topcoat
- Use straight from the tube - No hardener or mixing required!

CODE	SIZE	COLOR	CASE
UP0657	200g Tube	Olive Green	6

DOLPHIN FILLER RANGE



Dolphin™ ONE FILL All-in-One Premium Body Filler

Dolphin One Fill is an All-In-One Premium Body Filler. One Fill's intelligent micro-sphere technology formula builds like body filler yet is super smooth and pinhole free like glaze so you can skip the glaze and get on to priming and painting in 20 minutes.

- Industry leading adhesion and to more substrates
- Sands to a super fine powder that won't clog your sandpaper
- Featheredgedges with no lifting or balling
- Outstanding vertical hold

CODE	SIZE	COLOR	CASE
UP0659	0.8 US Gal Tin	Off White	4
UP0660	1 US Quart Tin	Off White	8



Dolphin™ Glaze Ultra Fine Finishing Glaze

Dolphin Glaze is a premium, technically advanced finishing glaze designed to eliminate pinholes and surface imperfections prior to painting. Its self-levelling formulation gives a smooth ultra fine finish which requires minimal sanding.

- Pinhole resistant
- Excellent adhesion
- Semi-flexible

CODE	SIZE	COLOR	CASE
UP0713	880ml	Turquoise	6
UP0714	440ml Bag	Turquoise	10



Dolphin™ Speed Glaze Ultra Fast Premium Glaze

Dolphin Speed Glaze is an advanced, lightweight, ultra-fast curing finishing glaze specially formulated to repair scratches, stone chips and pinholes. Using "Snap Cure" technology, it cures up to 3 times faster than a standard glaze.

- Up to 3 x faster curing (6-8 minutes at 68 F)
- Solvent impervious
- Excellent pinhole and scratch filling properties
- Effortless sanding
- Ultra-fine finish
- Self-leveling

CODE	SIZE	COLOR	CASE
UP0654	440ml Bag	Blue	10

MICROFILLER RANGE

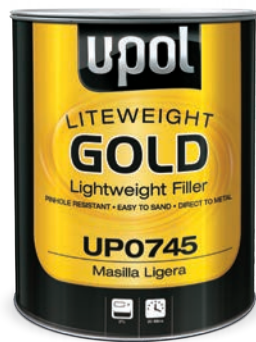


MicroFill
Pinhole eliminator and sealer

- Easy to use wipe on 1k Paste designed to eliminate micro pinholes and scratches after sanding.
- Seals the filled repair surface prior to priming
- Reduces primer consumption by up to 30%
- Reduces re-work
- Promotes adhesion between surface and primer
- Ready to overpaint in 15 mins at 20 degrees, no sanding required
- Free from microplastics

CODE	SIZE	COLOR	CASE
UP0686	6.7 Fluid Ounces	Dark Gray	10

GOLD FILLER RANGE



Liteweight Gold™
Lightweight Filler

Liteweight Gold features a smooth, creamy formula, making this premium lightweight filler easy to work, spread and sand. The versatility of a non-sagging formula combined with superior filling properties and excellent DTM adhesion makes **Liteweight Gold** the top choice of bodyshop professionals.

- Pinhole resistant
- Non-sagging, even on vertical surfaces
- Quick drying - solvent impervious and ready to sand, prime and paint in 15 minutes
- Easy to sand, even days or weeks after curing!
- Non-porous formula will not shrink or pull back



Substrates: Direct to metal, OEM paint surfaces, aluminum, galvanized, SMC, fiberglass, lightly abraded E coat, most plastics

CODE	SIZE	COLOR	CASE
UP0745	3L Tin	Gold	4



Liquid Gold™
Pourable Glazing Putty

Liquid Gold is a pinhole resistant, semi-flexible pourable glazing putty designed to fill minor dents and imperfections on most substrates.

- Perfect for rock chips and door dings or as a skim coat
- Smooth spreading, easy sanding
- Quick drying - solvent impervious and ready to sand, prime and paint in 15-20 minutes



Substrates: Direct to metal, OEM paint surfaces, aluminum, galvanized, SMC, fiberglass, lightly abraded E coat, most plastics

CODE	SIZE	COLOR	CASE
UP0670	615ml Bottle	Gold	10

GOLD FILLER RANGE



Gold Glaze™
Flowable Glaze

Gold Glaze is a pinhole resistant finishing glaze designed as a final skimcoat and finishing over repairs. Combines excellent leveling properties with easy sanding.

- Pinhole resistant
- Self-leveling, pinhole resistant
- Smooth and easy to spread
- Semi-flexible formula
- Quick drying - solvent impervious and ready to sand, prime and paint in 15-20 minutes



Substrates: Direct to metal, OEM paint surfaces, aluminum, galvanized, SMC, fiberglass, lightly abraded E coat, most plastics

CODE	SIZE	COLOR	CASE
UP0688	440ml Filler Bag	Gold	10

OTHER FILLERS



Flyweight™
Lightweight Polyester Filler

Flyweight polyester filler offers great filling properties, a smooth creamy consistency and easy sanding, all at an economical price.

- Tack free
- Pinhole resistant
- Easy to sand

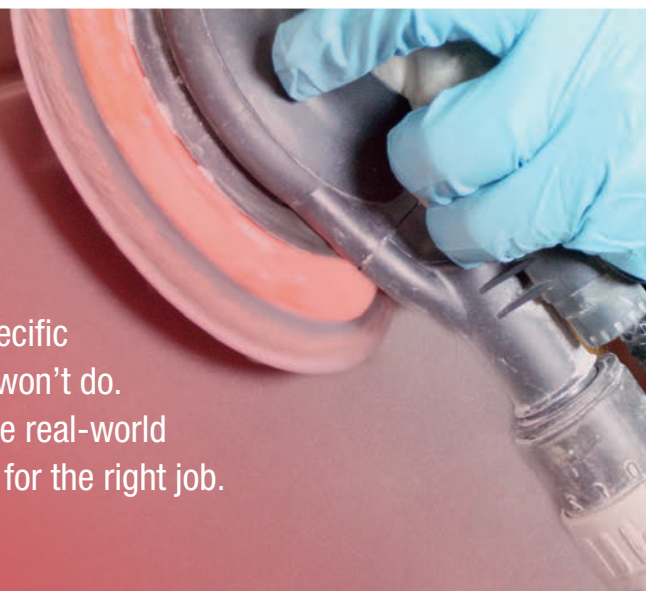


Substrates: Direct to metal, OEM paint surfaces, aluminum, galvanized, fiberglass

CODE	SIZE	COLOR	CASE
UP0711	3L Tin	Light Gray	4

U-POL SPECIALTY BODY FILLERS

U-POL specialty fillers are formulated for specific applications where an all purpose filler just won't do. Each product has been put through extensive real-world testing to ensure you have the right product for the right job.



Fibral® Fiberglass Filler

Fibral Fiberglass Filler takes the place of short and long strand products and is ideal for bridging holes while providing a tough resistant GRP coating.

- Smooth spreading and easy to apply
- Can be shaped and sanded once cured
- Completely waterproof
- Can be sanded and directly top coated in 20 minutes



Substrates: Bare steel, fiberglass, SMC, aluminum, rigid plastic, fully cured paint surfaces

CODE	SIZE	COLOR	CASE
UP0716	900ml Tin	Pale Yellow	8
UP0717	1.3L Dispenser	Pale Yellow	6
UP0753	440ml Bag	Pale Yellow	10
UP0754	880ml Bag	Pale Yellow	6

Fibral Lite® Lightweight Sandable Fiberglass Filler

Fibral Lite Fiberglass Filler takes the place of both short and long strand products. Its lightweight formula can be easily shaped and sanded once cured.

- Spreads like a short strand yet bridges holes like a long strand
- Non-sagging even on vertical surfaces - spreads, adheres, and finishes like a polyester filler
- Forms a hard, durable surface that is still smooth and very easy to sand
- Waterproof
- Can be finished with putty or glaze or directly primed



Substrates: Fiberglass, steel, plastics and aluminum

CODE	SIZE	COLOR	CASE
UP0700	3L Tin	Pale Yellow	4
UP0766	1 US Quart Tin	Pale Yellow	6

SPECIALTY FILLERS



Substrates: Bare metal, fiberglass, SMC, polypropylene, polyester putties and body fillers, fully cured paint surfaces

Reface™ 2K Polyester Spray Putty

Reface is a high build, 2K sprayable polyester specially developed to create an ultra flat surface prior to painting. The improved formulation features excellent adhesion to most substrates, creating an easy to sand base over steel and fiberglass surfaces, even vertical surfaces.

- Very high build and easy to sand
- Adheres to metal, fiberglass, fillers and primers
- Provides the ideal base for priming and for use with most paint systems

CODE	SIZE	COLOR	CASE
UP0719	1L Tin	White	6
UP0733	2.5L Tin	White	4
UP0739	60ml Bottle	Hardener	6

7061 Flexible High Density Bumper Filler

Skip the gun, cartridge and tip and switch to **U-POL 7061**. Fix road rash and other flexible repairs with **7061** Flexible High Density Body Filler. Versatile enough to use on a variety of substrates, and specially designed for flexible plastics.

- Solvent proof in 15-20 minutes
- Ideal for repairing bumpers - feather edges perfectly into plastic and dries very flexible
- Can be used with mesh for hole through and tab repairs
- Fast drying and very easy to sand



Substrates: TPO, EDPM, polypropylene, other flexible and rigid plastic components, steel, aluminum, galvanized, GRP

CODE	SIZE	COLOR	CASE
UP7061	600ml Tin	Black	6

U-POL D Fine Metallic Polyester Filler

U-POL D™ is an aluminum reinforced, heat resistant filler containing aluminum flakes.

- Versatile, high adhesion across a multitude of substrates
- Smooth spreading with excellent filling properties and easy sanding
- Waterproof - bond or fill with the same product



Substrates: SMC, fiberglass, steel, aluminum rigid plastics, OEM paint, wood

CODE	SIZE	COLOR	CASE
UP0709	1.1L Tin	Silver	8

SMC™ High Adhesion Filler

High adhesion bonding paste and filling compound specifically designed for rapid repair of cracks, holes and scratches in **SMC**, fiberglass, composite and other rigid materials. Ideal for the repair of cars, trucks, recreational vehicles, rail vehicles, marine craft and shipping containers.

- High adhesion easy sand fiber filler
- Carbon fiber reinforced formula gives structural strength to a repair
- Sand and coat to restore original finish



Substrates: SMC, fiberglass, composite, rigid plastics, bare metal, aluminum, and galvanized

CODE	SIZE	COLOR	CASE
UP0777	1.1L Tin	Black	8
UP0779	1.1L Tin	White	8

BPO HARDENERS



Replacement Hardeners

CODE	SIZE	COLOR	CASE
UP0671	0.75oz Tube	Blue	20
UP0672	1.3oz Tube	Blue	20
UP0681	0.5oz Tube	Blue	20
UP0682	2.75oz Tube	Blue	18

FILLER ANCILLARIES



**Onion Board™
Multi-Layered Mixing Palette**

The **ONION BOARD** is a wax free, clean environment for mixing fillers and materials.

- Reduces pinholing: specially formulated paper does not soak up resins and solvents
- Reduces clean up time and solvent cleaner use - simply tear off and discard used sheet!

CODE	SIZE	COLOR	CASE
UP0737	100 Sheets	White	10



Spreaders for Body Filler

- European style plastic spreader with a flat leading edge and 3 beveled edges
- Specially designed plastic that will not degrade or warp with extended use
- Two sizes in one - use the long side for larger repairs or the short side for detailed work

CODE	SIZE	COLOR	CASE
UP0738	Single Applicator	Black	20

SEALANTS



**Tiger Seal™
Adhesive Sealant Seam Sealer**

Tiger Seal is a direct to metal single component polyurethane sealant and adhesive that is ideal for a variety of applications. Its moisture cured, non-shrinking formula remains permanently flexible.

- Bonds direct to bare steel, aluminum and galvanized substrates
- Ready for use 1K formula
- Completely and permanently seals and bonds body panels, trim and seams
- Use to seal around windows, doors and lights
- Use a standard caulking gun with the cartridge
- Moisture cured formula can be tooled with water

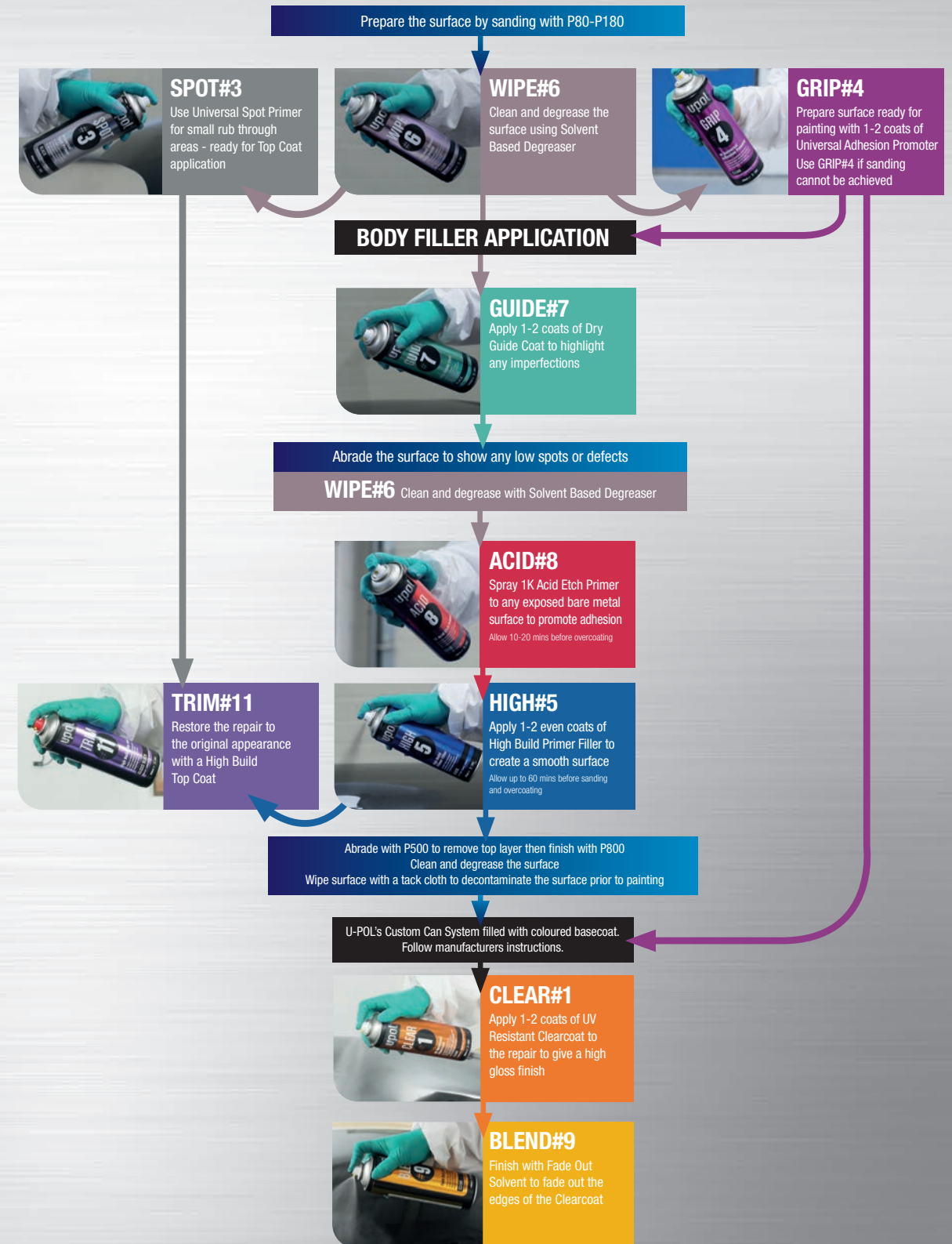
CODE	SIZE	COLOR	CASE
UP0727	310ml Cartridge	Black	12
UP0728	310ml Cartridge	White	12
UP0729	310ml Cartridge	Gray	12



Substrates: Steel, aluminum, brass, iron, fiberglass, most plastics, glass, wood, and ceramics

THERE'S A U-POL PREMIUM AEROSOL FOR ALL STAGES OF THE REPAIR PROCESS...

This simple process chart shows exactly which aerosol you need for which application.



PREMIUM AEROSOLS



CLEAR#1 High Gloss Clearcoat

An advanced clearcoat that gives an excellent high gloss finish in a convenient aerosol. Ideal for spot repairs, like fenders, bumper covers, mirror covers, and moldings.

- High gloss finish and excellent depth for a seamless and well-blended repair
- Fast drying for increased productivity and UV resistant for exceptional durability
- Compatible with most water or solvent based paint systems

CODE	SIZE	COLOR	CASE
UP0796	450ml Aerosol	Clear	6



WELD#2 Weld Through Primer - Zinc or Copper

A high adhesion, super conductive primer offering excellent rust and corrosion protection when applied to panels prior to Resistance Spot, MIG and TIG welding.

- High concentration of zinc or copper in the dry film
- Superior conductivity
- Clog free nozzle
- Fast drying - speeds up the welding process

CODE	SIZE	COLOR	CASE
UP0768	450ml Aerosol	Copper	6
UP0789	450ml Aerosol	Zinc	6



SPOT#3 Universal Spot Primer

A multi-function, fast drying universal spot primer ideal for small rub through and localized repairs.

- Two products in one! - Use directly on metal or plastic parts, no adhesion promoter required
- Perfect for use on cut through areas inside the booth prior to paint application
- Can be directly top-coated with most water or solvent based paint systems
- Highly flexible, fast drying and easy to sand
- 4" fan pattern tip provides greater coverage and atomizing at a finer rate, improving flash time between coats

CODE	SIZE	COLOR	CASE
UP0870	450ml Aerosol	Gray	6



GRIP#4 Universal Adhesion Promoter

Promotes paint adhesion to most automotive surfaces, like plastics, aluminum, galvanized metal, zinc, painted surfaces, fiberglass and even body fillers. Replaces the need to abrade surfaces in hard-to-sand areas, like under hoods and deck lids.

- Excellent adhesion characteristics
- Sprays flat
- Can be topcoated with most water or solvent based paint systems
- Provides a protective barrier against lifting or solvent attack

CODE	SIZE	COLOR	CASE
UP0799	450ml Aerosol	Clear	6



PREMIUM AEROSOLS

HIGH#5 High Build Primer

High build primer aerosol that fills uneven surfaces prior to topcoating. Ideal for spot repairs on fully cured paint, polyester body fillers, GRP and bonds directly to bare steel, aluminum, galvanized panels, and flexible plastics.

- Produces a similar film thickness to spray gun applied primers
- Includes flat fan for ultimate film build and versatility
- Saves time and materials – no need to mix paint or clean spray equipment and minimizes masking
- Chromate free and easy to sand
- Perfect for small area repairs
- Similar build and performance to 2k Urethane Primers
- Reduces key-to-key cycle time

CODE	SIZE	COLOR	CASE
UP0763V	450ml Aerosol	White	6
UP0765V	450ml Aerosol	Dark Gray	6
UP0791V	450ml Aerosol	Gray	6
UP0871	450ml Aerosol	Black	6



WIPE#6 Solvent Based Degreaser

An anti-silicone degreaser that removes contaminants including wax, grease and silicones.

- Fast evaporating and ideal for localized repairs
- Formulated to avoid attack on existing paint lines
- Can be use on bare metal and existing paint surfaces

CODE	SIZE	COLOR	CASE
UP0872	450ml Aerosol	Clear	6



GUIDE#7 Dry Guide Coat

A dry powder guide coat used to highlight and identify surface imperfections when sanding fillers or primers.

- Identifies pinholes in body filler
- Does not clog or block abrasives
- Suitable for dry or wet sanding
- Dries instantly

CODE	SIZE	COLOR	CASE
UP0873	450ml Aerosol	Black	6



ACID#8 Acid Etch Primer

Phosphoric acid ester formula promotes paint adhesion to difficult substrates, like galvanized steel and aluminum. Ideal for rub throughs in primer prior to application of color and new bare metal panels.

- Etch and prime bare metal in one step
- Flat fan high atomization nozzle offers a large fan pattern and excellent coverage
- Creates an anti-corrosive barrier that prevents steel from rusting
- Can be directly topcoated - no sanding required

CODE	SIZE	COLOR	CASE
UP0741V	450ml Aerosol	Gray	6
UP0837	450ml Aerosol	Black	6



Also available in 1L tin - UP0776 page 22

PREMIUM AEROSOLS



BLEND#9 Fade Out Reducer

A fast and effective blending solvent to fade out the edges of clearcoats and solid colors. Ideal for both single and multi-panel repairs.

- Invisible blended finish
- For use with all coatings
- Suitable for SMART repairs

CODE	SIZE	COLOR	CASE
UP0874	450ml Aerosol	Clear	6



GUARD#10 Gravi-Gard™ Stone Chip Protector

A textured, durable coating to protect against stone chips, salt, moisture and rust. Includes two nozzles to recreate a variety of OEM textures.

- Sound dampening - ideal for body panels and inside engine compartments
- Bonds directly to bare metal and prepared aluminum and galvanized
- High build formulation covers weld marks and seams
- Compatible with most waterborne or solvent based paint systems

CODE	SIZE	COLOR	CASE
UP0875	450ml Aerosol	Black	6
UP0884	450ml Aerosol	Gray	6



TRIM#11 High Build Top Coat

Restores original appearance to body panels, under hood, chassis and wheels.

- Bonds directly to bare steel, aluminum trim flexible plastics, and existing paint surfaces
- Replicates factory look in one coat, drying to a truer black than competitive trim black aerosols
- High gloss, satin, matte or metallic finish

CODE	SIZE	COLOR	CASE
UP0876	450ml Aerosol	Gloss Black	6
UP0877	450ml Aerosol	Matte Black	6
UP0878	450ml Aerosol	Satin Black	6
UP0879	450ml Aerosol	Gloss White	6
UP0880	450ml Aerosol	Steel Wheels	6
UP0881	450ml Aerosol	Silver Wheels	6



ECOAT#12 E-Coat Repair

Unique direct to metal coating that matches the color and gloss of factory primer and e-colors.

- Excellent adhesion over bare steel, aluminum, most plastics, paints and primers
- Super durable, UV resistant
- Superior corrosion protection, passes a rigorous 100 hour salt spray resistance test
- Compatible with most top coats

CODE	SIZE	COLOR	CASE
UP0890	450ml Aerosol	Black	6
UP0891	450ml Aerosol	Gray	6
UP0892	450ml Aerosol	Light Green	6
UP0893	450ml Aerosol	Beige	6
UP0894	450ml Aerosol	Olive Green	6
UP0895	450ml Aerosol	White	6



POWER CAN AEROSOLS



Power Can™ Professional Spray Paint Aerosols

Power Can Aerosols have been formulated to create a permanent high build, fast drying, quality finish. All Power Can Aerosols are contained in extra powerful pressurized spray cans and feature a specialized large fan pattern, high output, high opacity and no overspray nozzle.

CODE	SIZE	COLOR	CASE
UP0801	500ml Aerosol	Satin Black	12
UP0802	500ml Aerosol	Matte Black	12
UP0803	500ml Aerosol	Gloss Black	12
UP0804	500ml Aerosol	Clear Lacquer	12
UP0805	500ml Aerosol	Gray Primer	12
UP0810	500ml Aerosol	Gloss White	12
UP0830	500ml Aerosol	Etch Primer	12

AEROSOL FILLING MACHINES

Custom Can™ Color Center, Fill-One Machines and accessories

- Pre-gassed aerosols ready to be filled with 100ml of paint
- Compatible with most solvent and water based coatings
- Produces a clog-free, spray gun like application
- Electric, pneumatic and manual machines available



CODE	PRODUCT	SIZE	CASE
UP0811	Custom Can Solvent Based Aerosol	400ml Aerosol	12
UP0813	Custom Can Pneumatic Aerosol Filling Machine	-	-
UP0818	Custom Can Water Based Aerosol	400ml Aerosol	12
UP0819	Custom Can Electric Multi-Fill Machine	-	-
UP0851	FILL-ONE Solvent Based Aerosol	400ml Aerosol	12
UP0852	FILL-ONE Water Based Aerosol	400ml Aerosol	12
UP0853	FILL-ONE+ Base support plate	-	-
UP0854	Pneumatic FILL-ONE+ Custom Can Machine	-	-
UP0859	Manual FILL-ONE Custom Can Machine	-	-

TIME AND COST SAVINGS WITH CLEAN, EASY TO USE & CONVENIENT

U-POL CUSTOM CAN FILL-ONE AEROSOL FILLING SYSTEM

- Fills quickly in 10 seconds
- Easy to use - no need to measure or mix
- Proprietary cap leaves a color swatch for easy identification
- Minimizes labor and cleaning time
- No loss of paint product or waste
- Pneumatic operation from a standard compressor
- Precise color matching
- Access to customers who require the convenience of 1-3 fills - opportunity to increase turnover
- Environmentally friendly



U-POL COATINGS

Made from the highest quality European resins, U-POL coatings offer superior performance in a range of formulations to suit a variety of shop conditions and specialized applications.



SYSTEM 20

- **SYSTEM 20** is a comprehensive line of coatings, primers and reducers for use with most water and solvent borne basecoat paint systems.
- **SYSTEM 20** features excellent U.V. resistance and a durable high build, high gloss finish.
- **SYSTEM 20** is available in both National Rule and Low VOC formulations.



National Rule Clearcoats

Made from the highest quality European resins, **U-POL System 20** Clearcoats offer superior performance in a range of formulations to suit a variety of shop conditions and specialized applications.

- U.V. resistant high build finish with excellent gloss retention, flow and non-sag properties
- Can be applied over most water and solvent borne basecoat paint systems
- Formulations for overall repairs
- Easy to apply, sand and buff
- Excellent weather, scratch and abrasion resistance
- Air dry, low bake or IR cure

2:1 HS Super Clearcoat

U-POL's original 2:1 high solids overall European clear coat. Outstanding DOI, suitable for both air dry and bake booth application. Sand and polish after 6 hours at 70°F

CODE	RECOMMENDED REPAIR TYPE	SIZE	COLOR	CASE
UP2802	Overall/Multi-panel	5L Tin	Clear	2

2:1 HS Overall Clearcoat

CODE	RECOMMENDED REPAIR TYPE	SIZE	COLOR	CASE
UP2822	Overall/Multi-panel	5L Tin	Clear	2

4:1 Universal Clearcoat

CODE	RECOMMENDED REPAIR TYPE	SIZE	COLOR	CASE
UP2882	Overall/Multi-panel	1 US Gallon Tin	Clear	4
UP2892	Spot/Panel	1 US Gallon Tin	Clear	4



NATIONAL RULE COATINGS

National Rule Hardeners

For use with **U-POL** 2K Primers and Clearcoats.

Fast Hardener

CODE	SIZE	COLOR	CASE
UP2307	250ml Tin	Clear	12
UP2303	1L Tin	Clear	6
UP2305	2.5L Tin	Clear	4

Standard Hardener

CODE	SIZE	COLOR	CASE
UP2327	250ml Tin	Clear	12
UP2323	1L Tin	Clear	6
UP2325	2.5L Tin	Clear	4

Slow Hardener

CODE	SIZE	COLOR	CASE
UP2333	1L Tin	Clear	6
UP2335	2.5L Tin	Clear	4



4:1 High Build Primer

Multipurpose primer offering the functionality of '3 products in 1'. Mix 4:1 for a primer filler, 4:1:1 for a primer surfacer or 4:1:2 for a primer sealer.

- Use for spot repair and large panels
- Excellent build and surface leveling properties
- Easy to sand wet or dry
- Can be applied direct to metal, over most plastics and over unsanded E-coat, aluminum* and galvanized*
- Tintable with up to 10% with urethane mixing base

*Requires an acid etch primer, like ACID#8™



Substrates: Bare metal, properly prepared aluminum and galvanized, GRP, SMC, fiberglass, polyester filler, OEM surfaces

CODE	SIZE	COLOR	CASE
UP2251	1L Tin	Gray	6
UP2253	1 US Gallon Tin	Gray	2
UP2274	1L Tin	Black	6
UP2275	1 US Gallon Tin	Black	2
UP2276	1L Tin	White	6
UP2277	1 US Gallon Tin	White	2

Rapid System™ Primer

Rapid System Primer with unique new Rapid Cure Technology is ready to sand in less than 1 hour, reduces cycle time without increasing energy cost. It's easy to use and features excellent hiding capabilities for a high quality uniform foundation prior to color coating.

- Fast air dry finish saves time and energy costs
- Excellent coverage and easy sanding
- Only one hardener required for all climates and conditions, reducing your stock investment
- Mix 4:1:1 with Rapid System Primer Hardener and Rapid System Primer Reducer
- Use with other Rapid System products to increase job throughput from start to finish



CODE	SIZE	COLOR	CASE
UP6303	1 US Gallon tin	Gray	2

NATIONAL RULE COATINGS



Rapid System™ Primer Hardener

Rapid System Primer Hardener - only one hardener required for all climates and conditions, reducing your stock investment.

- For use with **Rapid System** Primer

CODE	SIZE	COLOR	CASE
UP6425	250ml Tin	Clear	12
UP6401	1L Tin	Clear	6



Rapid System™ Primer Reducer

CODE	SIZE	COLOR	CASE
UP6701	1L Tin	Clear	6

VOC COMPLIANT COATINGS

2.1 VOC Clearcoats

Made from the highest quality European resins, **U-POL System 20** 2.1 VOC Clearcoats offer superior performance in a range of formulations to suit a variety of shop conditions and specialized applications.

- U.V. resistant high build finish with excellent gloss retention, flow and non-sag properties
- Can be applied over most water and solvent borne basecoat paint systems
- Formulations for spot, panel or overall repairs
- Easy to apply, sand and buff
- Excellent weather, scratch and abrasion resistance
- Air dry, low bake or IR cure



2.1 VOC 2:1 Clearcoat

CODE	RECOMMENDED REPAIR TYPE	SIZE	COLOR	CASE
UP2843	Overall	5L Tin	Clear	2

2.1 VOC 4:1 Water Clearcoat

CODE	RECOMMENDED REPAIR TYPE	SIZE	COLOR	CASE
UP2872V	Overall/Multi-panel	1 US Gallon Tin	Clear	4

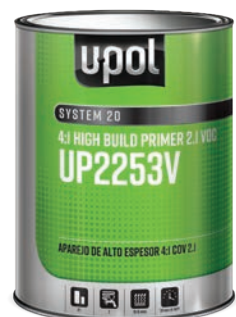
2.1 VOC 4:1 High Build Primer

2.1 VOC compliant multipurpose primer offering the functionality of '3 products in 1'. Mix 4:1 for a primer filler, 4:1:1 for a primer surfacer or 4:1:2 for a primer sealer.

- Use for spot repair and large panels
- Excellent build and surface leveling properties
- Easy to sand wet or dry
- Can be applied direct to metal, over most plastics and over unsanded E-coat, aluminum* and galvanized*
- Tintable with up to 10% with urethane mixing base
- 2.1 VOC Compliant when used with 2.1 VOC hardeners

*Requires an acid etch primer, like ACID#8™

CODE	SIZE	COLOR	CASE
UP2253V	1 US Gallon Tin	Gray	2
UP2251V	1L Tin	Gray	6
UP2275V	1 US Gallon Tin	Black	2
UP2277V	1 US Gallon Tin	White	2
UP2276V	1L Tin	White	6



Substrates: Bare metal, properly prepared aluminum and galvanized, GRP, SMC, fiberglass, polyester filler, OEM surfaces, E-coat



VOC COMPLIANT COATINGS

2.1 VOC Hardeners

For use with U-POL 2.1 VOC Compliant 2K Primers and Clearcoats.

2.1 VOC Fast Hardener

CODE	SIZE	COLOR	CASE
UP2381	1L Tin	Clear	6
UP2382	2.5L Tin	Clear	4

2.1 VOC Standard Hardener

CODE	SIZE	COLOR	CASE
UP2395	237ml Tin	Clear	12
UP2391	1L Tin	Clear	6
UP2392	2.5L Tin	Clear	4

2.1 VOC Slow Hardener

CODE	SIZE	COLOR	CASE
UP2371	1L Tin	Clear	6



VOC COMPLIANT COATINGS

Rest assured that U-POL System 20 comply with 2.1 VOC restricted area regulations. The System 20 2.1 VOC Compliant Coatings line offers exceptional products for every stage of the repair process without sacrificing quality or useability. You'll get unrivaled results the first time, every time.





Maximum Clearcoat and Hardener

Clearcoat & hardener with a great gloss finish

- Uses European quality resins
- Crystal clear finish
- Excellent gloss retention
- Easy to apply with excellent flow and non-sag properties
- Hardens rapidly to give a durable, UV resistant finish. Once cured it can be easily polished
- Can be used for cut in, spot, panel and multi-panel repairs (up to 3)
- No die back and no solvent pop
- Air dry or low bake
- Two Hardeners - Standard and Slow
- Can be reduced 5-10%

Maximum 4:1 Clearcoat

CODE	SIZE	COLOR	CASE
MXM80	1 US Gallon Tin	Clear	4

Maximum 4:1 Hardener

CODE	SIZE	COLOR	CASE
MXM30	Standard 1 US Quart	Clear	4
MXM31	Slow 1 US Quart	Clear	4

SPECIALTY COATINGS



Gravitex Plus Underbody Coating

Gravitex Plus is a hard, durable underbody coating that can also be used to reproduce the manufacturer's original stone chip protective finish.

- Ready for use 1K formula - no measuring or mixing required!
- Protects against stone chips, salt, rust and dampness
- Helps to deaden sound and vibrations - ideal for inside engine compartments and panels
- High build formula covers weld marks and seams
- Can be top coated once dry

CODE	SIZE	COLOR	CASE
UP0721	1L Bottle	Black	12
UP0722	1L Bottle	White	12
UP0723	1L Bottle	Gray	12



Substrates: Bare metal and primed aluminum or galvanized panels



ACID#8 Acid Etch Primer

1K ready to spray phosphoric acid ester formula promotes paint adhesion to difficult substrates, like galvanized steel and aluminum. Ideal for rub throughs in primer prior to application of color and on new bare metal panels.

- Etch and prime bare metal in one step
- Creates an anti-corrosive barrier that prevents steel from rusting
- Can be directly topcoated - no sanding required
- Available in additional colors in an aerosol format

CODE	SIZE	COLOR	CASE
UP0776	1L Tin	Gray	6



Substrates: Bare metal, prepared aluminum and galvanized, GRP, SMC, fiberglass, polyester filler, OEM surfaces



BARCOAT Quick Drying Isolator

Bar Coat is a ready to spray 1K isolator / barrier that solves the problem of solvent and recoat sensitive coatings. This single coat isolator is THE solution for problem paints. The proprietary alcohol based product works as a barrier between all automotive paints. Prime or seal prior to top coating.

- Overcoat with suitable primer in 1 hour
- Suitable for flexible plastics if used in combination with Grip #4

CODE	SIZE	COLOR	CASE
UP0720	1L Tin	Yellow	6

Substrates: Bare metal, prepared aluminum and galvanized, GRP, SMC, fiberglass, polyester filler, OEM surfaces

SYSTEM 20 PAINT ANCILLARIES



Water Based Degreaser

- Anti-static panel wipe - excellent anti-static properties
- Removes contaminants including wax, grease and silicones
- Water based formula for use on solvent sensitive plastics
- Excellent for organic contaminants
- VOC Compliant in all 50 states

CODE	SIZE	COLOR	CASE
UP2002	5L Canister	Clear	2



Solvent Based Degreaser

System 20 Degreasers are anti-static and anti-silicone panel wipes with aggressive degreasing action to remove contaminants such as wax, grease and silicones. Suitable for use on bare metal and existing paint surfaces prior to any painting application.

- Effectively removes contaminants and static
- Does not attack existing paint films
- Compatible with most paint systems

CODE	SIZE	SPEED	CASE
UP2012	5L Tin	Fast	2
UP2022	5L Tin	Slow	2

Rocket™ Paint Accelerator

- One 250ml bottle of **Rocket** will accelerate up to 63 sprayable quarts of primer or clearcoat!
- Speeds up demasking and overpainting when mixed with 2K hardeners
- Increases throughput, improving profits
- Can be used with all **U-POL** coatings
- Reduces paint 'skinning' in high humidity areas

CODE	SIZE	COLOR	CASE
UP0735	250ml Bottle	Clear	10



Fisheye Eliminator Anti-Silicone Additive

- Produces the perfect finish in difficult application conditions
- Improves leveling
- Eliminates silicone disruptions to the paint surface

CODE	SIZE	COLOR	CASE
UP2001	250ml Bottle	Clear	10



SYSTEM 20 REDUCERS



Multifunction Reducer

Improved formulation provides better open time, faster final dry & better melt-in of overspray. For use with U-POL primers, clearcoats and most solventborne basecoats.

CODE	SIZE	SPEED	CASE
UP2144	1 US Gallon	Fast	4
UP2145	1 US Gallon	Standard	4
UP2146	1 US Gallon	Slow	4

SPRAY GUNS



Spray Guns

High performance automotive refinishing spray guns.

CODE	DESCRIPTION	TIP SIZE	CASE
UP0321	HVLP Mini Spray Gun	1.0mm	1
UP0323	HVLP Gravity Spray Gun	1.3mm	1
UP0324	HVLP Gravity Spray Gun	1.4mm	1
UP0326	HVLP Gravity Spray Gun	1.7mm	1
UP0313	HVLP Gravity Spray Gun	2.5mm	1

U-POL - WITH YOU EVERY STEP OF THE REPAIR PROCESS

We offer exceptional products for every stage of the repair process. From surface preparation to clearcoats, we'll help you get unrivaled results the first time, every time.



upol

DRIVING SURFACE PERFECTION™

COLOR PERFECTION BEGINS WITH AN EXCEPTIONAL UNDERCOAT.



ACHIEVE THE ULTIMATE FINISH WITH SYSTEM 20 PRIMERS

The key to achieving color perfection begins with an exceptional undercoat. U-pol's new line of System 20 High Build Black and White Primers deliver the same optimal performance as High Build Gray Primer but can also be mixed to provide different shades of gray. The end result: Easier color matching, lower paint consumption and improved productivity.

Like U-pol's System 20 High Build Gray Primer, these new white and black primer colors are also "3" products in 1" for usage as a primer filler, primer surfacer or primer sealer.

CREATE THE RIGHT SHADE FOR ANY COLOR CAR

White Gray Black



Achieve 5 shades of gray with white, gray and black.

To identify the optimal undercoat color, please refer to paint wheel above.

HIGH BUILD PRIMER	1	2	3	4	5
White	100%		75%		
Gray		100%		50%	
Black			25%	50%	100%

RAPTOR®

TOUGH AND TINTABLE PROTECTIVE COATING

RAPTOR Tough and Tintable Protective Coating is a durable urethane coating that provides surfaces with a protective barrier that can withstand the toughest situations.

Developed to tolerate most climatic conditions, RAPTOR is U.V. Resistant and won't fade or "chalk" even after hours in the sun. RAPTOR is also water resistant and helps to protect surfaces from rust, making it perfect for surfaces that are frequently exposed to water, including salt water.

RAPTOR's versatility makes it perfect for almost any application. Spray or roll RAPTOR on high traffic areas; it's scratch and stain resistant and easy to clean, simply hose it off. Its flexible formulation can handle impacts without cracking, making it perfect for its most popular application as a truck bedliner.

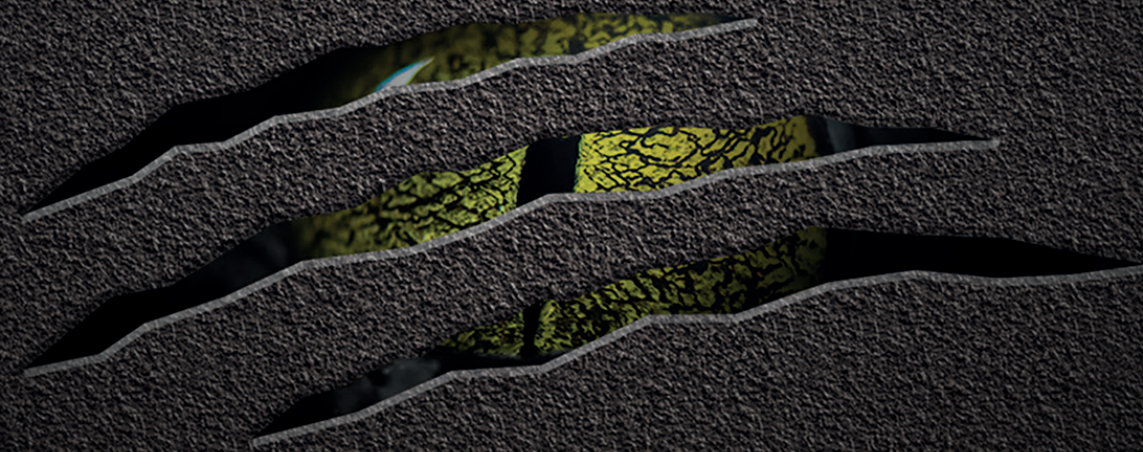
RAPTOR is unlike other bedliners or protective coatings. 2-component urethane technology far surpasses the durability of epoxy and 1-component coatings. And in case it does scratch (which is tough to do!), RAPTOR can easily be repaired. You can't do that with most of the other bedliners and protective coatings!

RAPTOR protects industrial surfaces in the harshest environments as well as the smaller surfaces we rely on every day. It's durable, tintable, looks great and lasts a long time.

IDEAL FOR MULTIPLE APPLICATIONS



USE ON VARIOUS SURFACES



RAPTOR 2K System Aerosol

THE DURABILITY OF RAPTOR WITH THE CONVENIENCE OF AN AEROSOL
The convenient RAPTOR 2K System Aerosol offers a fast, easy way to apply RAPTOR without compromising performance, no spray equipment necessary. Ideal for spot repairs. More than just a bed liner, RAPTOR is a highly durable and tough protective coating. Use RAPTOR on a variety of surfaces that need a protective barrier that withstands the toughest situations. Using RAPTOR is easy - Now you can spray RAPTOR 2K System Aerosol for a no mess, no clean-up application. It's easy!

- Easy and convenient - activate using the valve on base
- Textured "gun" finish
- No need for spray equipment
- Ideal for both consumers and professionals



CODE	DESCRIPTION	SIZE	COLOR	CASE
UP4842	RAPTOR 2K Aerosol	14.1 OZ.	Anti-Corrosive Epoxy Primer	6
UP4883	RAPTOR 2K Aerosol	13.2 OZ.	Black	6
UP4884	RAPTOR 2K Aerosol	13.2 OZ.	Basalt Gray	6
UP4885	RAPTOR 2K Aerosol	13.2 OZ.	White	6
UP4886	RAPTOR 2K Aerosol	13.2 OZ.	Flame Red	6
UP4887	RAPTOR 2K Aerosol	13.2 OZ.	Olive Green	6

RAPTOR KITS BED LINER & PROTECTIVE COATING



1 US Quart RAPTOR Kit Tough & Protective Bedliner Kit

The 1 US Quart **RAPTOR** Kit is ideal for smaller applications and touch-ups. Each kit contains 1 bottle of **RAPTOR** for about 30 square feet of coverage. Compatible with both UP0726 **RAPTOR** Application Spray Gun and UP4880 **RAPTOR** Professional Vari-Nozzle Application Gun.

CODE	SIZE	COLOR	VOC	CASE
UP4801	1 Quart Kit	Black	National Rule	6
UP4802	1 Quart Kit	Tintable	National Rule	6
UP4803	1 Quart Kit	Black	Low VOC	6
UP4804	1 Quart Kit	Tintable	Low VOC	6

1 US Gallon RAPTOR Kit Tough & Protective Bedliner Kit

The 1 US Gallon **RAPTOR** Kit is the industry standard in bedliner coating. Each kit contains four quart bottles of **RAPTOR** and one quart tin of hardener. Each kit covers approximately 125 square feet, enough to do a full size pick-up truck bed. Compatible with both UP0726 **RAPTOR** Application Spray Gun and UP4880 **RAPTOR** Professional Vari-Nozzle Application Gun.



CODE	SIZE	COLOR	VOC	CASE
UP0820	1 Gallon Kit	Black	National Rule	1
UP0821	1 Gallon Kit	Tintable	National Rule	1
UP4807	1 Gallon Kit	White	National Rule	1
UP0820V	1 Gallon Kit	Black	Low VOC	1
UP0821V	1 Gallon Kit	Tintable	Low VOC	1
UP4808 VOC	1 Gallon Kit	White	Low (2.6) VOC	1

RAPTOR Fiberglass Repair Kit Repairs holes, splits and cracks

This easy-to-use kit contains everything you need to repair holes, splits, and cracks in most types of surfaces, including metal, wood, brick, and hard plastics. It can be easily molded, AND permanently retains its shape.

In addition to repairing auto body damage, it's also ideal for repairing all kinds of other items around the home, including drainpipes and gutters, so it's a perfect fit for businesses with walk-in traffic.

Our **RAPTOR** Fiberglass Repair Kit forms a tough, fiberglass-reinforced plastic that bonds to most materials, and provides up to 6 square feet of coverage for your application!

Each **RAPTOR** Fiberglass Repair Kit includes:

- Fiberglass resin and resin hardener
- Resin applicator brush,
- Mixing cup and mixing sticks
- Generous amount of fiberglass matting
- Instruction guide



CODE	SIZE	COLOR	VOC	CASE
UP5050	500ml	-	-	4



200 Liter RAPTOR Drums

The 200 liter drum provides the coverage and protection needed for large and OEM applications. With **RAPTOR's** 3:1 mix ratio, you will need a total of 70 liters of hardener (14 of the 5L Hardener containers) for every 200 liter drum.

CODE	SIZE	COLOR	VOC	CASE
UP4870	200L Drum	Black	NR/2.6 VOC	1
UP4871	200L Drum	Tintable	NR/2.6 VOC	1
UP4872	200L Drum	White	NR/2.6 VOC	1
UP4824	5L Tin	Hardener	2.6 VOC	2

Hardener sold separately.

RAPTOR 2:1 Anti-Corrosive Epoxy Primer

RAPTOR Anti-Corrosive Epoxy Primer is a 2K high performance primer specifically designed to be used under most standard paints and **RAPTOR** Protective Coating to further extend the protective and anti-corrosive properties. The advanced resin technology improves adhesion to bare metal and most other prepared surfaces. It contains a blend of anti-corrosive additives to inhibit rust and corrosion and offers excellent salt spray resistance to extend the life of **RAPTOR** Protective Coating.

- Can be applied directly over surface rust
- Can overpaint with standard paints as well as **RAPTOR**
- Superior durability
- Can be applied wet on wet



CODE	SIZE	COLOR	CASE
UP4834	0.8 US Gallon Primer	Grey	3
UP4832	1 US Quart Hardener	Clear	6
UP4835	0.4 US Gallon Primer	Grey	6
UP4833	1 US Pint Hardener	Clear	6

RAPTOR Adhesion Promoter

Promotes paint adhesion to most automotive surfaces, like plastics, aluminum, galvanized metal, zinc, painted surfaces, fiberglass and even body fillers. Replaces the need to abrade surfaces in hard-to-sand areas, like under hoods and deck lids.

- Excellent adhesion characteristics
- Sprays flat
- Can be topcoated with most water or solvent based paint systems
- Provides a protective barrier against lifting or solvent attack



CODE	SIZE	COLOR	CASE
UP5024	450ml Aerosol	Clear	6



RAPTOR Acid Etch Primer

Phosphoric acid ester formula promotes paint adhesion to difficult substrates, like galvanized steel and aluminum. Ideal for rub throughs in primer prior to application of color and new bare metal panels.

- Etch and prime bare metal in one step
- Flat fan high atomization nozzle offers a large fan pattern and excellent coverage
- Creates an anti-corrosive barrier that prevents steel from rusting
- Can be directly topcoated - no sanding required

CODE	SIZE	COLOR	CASE
UP5023	450ml Aerosol	Gray	6



RAPTOR Rubberized Undercoating

A rubberized undercoating, suitable for application on vehicle underbodies, quarter panels and wheel wells. It's easy to use and can be overpainted for a customized finish. Dries to a soft finish that protects against rust and stone chips while reducing road noise.

- Protects against rust and stone chips
- Reduces road noise
- Paintable for customized finish

CODE	SIZE	COLOR	CASE
UP4840	15oz Aerosol	Black	12



RAPTOR Accessories

A complete line of RAPTOR accessory products is available to prep, apply and upgrade your RAPTOR application.

CODE	DESCRIPTION	CASE
UP0726	Standard Application Gun	5
UP4880	Adjustable Nozzle Professional Application Gun	6
UP4800	Traction Slip Resistant Additive (200 Grams)	12

RAPTOR HIGH HEAT AEROSOLS



The U-POL RAPTOR High Heat range consists of specialised coatings designed to withstand extreme temperatures while providing excellent protection for automotive components.

Key features of the RAPTOR High Heat range include:

- High temperature resistance
- Durability
- Ceramic technology
- Ease of use
- Protection against corrosion



HIGH HEAT AEROSOLS

RAPTOR ROLL BAR & CHASSIS

A professional quality paint, ideal for use on roll bars and chassis or any vehicle surface that needs additional protection from impact, abrasion, UV, corrosion and water damage. **RAPTOR** Roll Bar & Chassis' advanced formula resists temperatures up to 250°F and is 5x tougher* than ordinary paints. It dries fast to give an attractive, smooth finish that has superior adhesion and resists fading from the sun. It's also self priming, so can be used direct to most prepared metal without the need for a primer.



- Heat Resistant up to 250°F
- Superior UV resistance resists fading from the sun
- 5x Tougher than ordinary paints
- Direct to metal no need for a primer
- Clog Free Fan Nozzle gives a smooth finish on larger areas

CODE	SIZE	COLOR	CASE
UP4900	10oz	Gloss Black	12
UP4901	10oz	Satin Black	12

RAPTOR WHEEL PAINT

A professional quality wheel paint, ideal for renewing and extending the life of worn or damaged wheels. **RAPTOR** Wheel Paint's advanced formula resists temperatures up to 250°F and is 5x tougher than ordinary paints*, to provide superior protection from impact, heat, stone chips, brake dust and corrosion. It's easy to use and dries fast to give an attractive, smooth finish with excellent adhesion that resists fading from the sun. Suitable for use on all types of primed metal wheels including steel, aluminum and alloys.



- Heat Resistant up to 250°F
- Chemically resistant to oils and traffic film
- Protects against stone chips and brake dust
- 5x Tougher than ordinary paints
- Fast drying - touch dry in 30 mins
- Clog Free Spot Nozzle – ideal for 3D surfaces

CODE	SIZE	COLOR	CASE
UP4907	10oz	Satin Black	12
UP4908	10oz	Silver	12
UP4909	10oz	Gloss Black	12

RAPTOR ENGINE ENAMEL PRIMER

A professional quality engine enamel, ideal for use on engine blocks, engine accessories and other surfaces in the engine compartment. **RAPTOR** Engine Enamel contains ceramic resins that resist temperatures up to 600°F and is 5x tougher than ordinary paints* to provide superior protection from heat, oil and other automotive fluids. It's easy to use and dries fast to give an attractive, smooth finish with excellent adhesion that will not blister, flake, crack or peel. Suitable for use on all types of primed metals (steel, aluminum and alloys).



- Ceramic technology - Heat Resistant up to 600°F (retains gloss)
- Superior corrosion resistance
- Excellent adhesion – won't blister, flake, crack or peel
- 5x Tougher than ordinary paints
- Fast drying - touch dry in 30 mins
- Clog Free Spot Nozzle – ideal for 3D surfaces

CODE	SIZE	COLOR	CASE
UP4920	10oz	Gray	12

HIGH HEAT AEROSOLS

RAPTOR ENGINE ENAMEL

A professional quality engine enamel, ideal for use on engine blocks, engine accessories and other surfaces in the engine compartment. **RAPTOR** Engine Enamel contains ceramic resins that resist temperatures up to 600°F and is 5x tougher than ordinary paints* to provide superior protection from heat, oil and other automotive fluids. It's easy to use and dries fast to give an attractive, smooth finish with excellent adhesion that will not blister, flake, crack or peel. Suitable for use on all types of primed metals (steel, aluminum and alloys).



- Ceramic technology - Heat Resistant up to 600°F (retains gloss)
- Superior corrosion resistance
- Excellent adhesion – won't blister, flake, crack or peel
- 5x Tougher than ordinary paints
- Fast drying - touch dry in 30 mins
- Clog Free Spot Nozzle – ideal for 3D surfaces

CODE	SIZE	COLOR	CASE
UP4921	10oz	Bright Red	12
UP4922	10oz	Gloss Black	12
UP4923	10oz	Satin Black	12
UP4924	10oz	Flat Black	12
UP4925	10oz	Gloss Clear	12

RAPTOR CALIPER ENAMEL

A professional quality enamel, ideal for customizing and extending the life of brake calipers. **RAPTOR** Caliper Enamel contains ceramic resins that resist temperatures up to 950°F and is 5x tougher than ordinary paints*, to provide superior protection from impact, heat, brake dust, automotive fluids and corrosion. It's easy to use and dries fast to give an attractive, smooth finish with excellent adhesion that will not blister, flake, crack or peel. It's also self-priming, so can be used direct to most prepared metals without the need for a primer.



- Advanced Ceramic Technology - Heat Resistant up to 950°F
- Achieves high gloss finish
- Superior corrosion resistance
- 5x Tougher than ordinary paints
- Direct to metal – no need for a primer
- Clog Free Spot Nozzle – ideal for coating brake calipers

CODE	SIZE	COLOR	CASE
UP4930	10oz	Satin Black	12
UP4931	10oz	Real Red	12

RAPTOR FLAME PROOF PRIMER

A professional quality flameproof paint, ideal for use on exhaust manifolds, headers, exhaust systems and other areas that require protection from very high heat. **RAPTOR** Flameproof is based on advanced ceramic technology and high heat resistant pigments that withstand temperatures up to 2000°F and is 5x tougher than ordinary paints*. Once fully cured it provides superior protection from heat, oil and other automotive fluids. It's easy to use and dries fast to give an attractive, smooth finish with excellent adhesion that will not blister, flake, crack or peel. Suitable for use on all types of primed metals including steel and alloys.



- Advanced Ceramic Technology (incorporates advanced heat resistant pigment technology) - Heat Resistant up to 2000°F
- Superior protection from heat, oil and other automotive fluids
- Excellent adhesion – won't blister, flake, crack or peel
- Clog Free Spot Nozzle – ideal for 3D surfaces
- 5x Tougher than ordinary paints

CODE	SIZE	COLOR	CASE
UP4940	10oz	Gray	12

HIGH HEAT AEROSOLS

RAPTOR FLAME PROOF

A professional quality flameproof paint, ideal for use on exhaust manifolds, headers, exhaust systems and other areas that require protection from very high heat. **RAPTOR** Flameproof is based on advanced ceramic technology and high heat resistant pigments that withstand temperatures up to 2000°F and is 5x tougher than ordinary paints*. Once fully cured it provides superior protection from heat, oil and other automotive fluids. It's easy to use and dries fast to give an attractive, smooth finish with excellent adhesion that will not blister, flake, crack or peel. Suitable for use on all types of primed metals including steel and alloys.



- Advanced Ceramic Technology (incorporates advanced heat resistant pigment technology)
 - Heat Resistant up to 2000°F
- Superior protection from heat, oil and other automotive fluids
- Excellent adhesion – won't blister, flake, crack or peel
- Clog Free Spot Nozzle – ideal for 3D surfaces
- 5x Tougher than ordinary paints

CODE	SIZE	COLOR	CASE
UP4941	10oz	Satin Clear,	12
UP4942	10oz	Flat Black	12
UP4943	10oz	Flat Red	12



CERTIFICATIONS & TEST RESULTS

RAPTOR currently has been tested in accordance with the following test methods.

1. ANTI-SLIP

Accredited BS 7976-2 and ASTM E303-93 (when used with RAPTOR Traction)

2. FLAMMABILITY

FMVSS 302, ISO 3795, BS AU169A

3. WATERSOAK

ASTM D870-15 Pass

4. SALT SPRAY

ASTM B 117-16
RAPTOR Anti-Corrosive Epoxy Primer test completed at >1000 hours according to ASTM protocols (B117) at an independent laboratory

5. CHIP RESISTANCE

ASTM D3359-09E2

6. IMPACT RESISTANCE

ASTM D2794-93(2010)

7. TABER ABRASION RESISTANCE

ASTM D4060-14

CHEMICAL RESISTANCE

- ASTM D1308
- Diesel
- NaOH
- Gas
- Hydraulic Oil
- Xylene
- Alcohol
- Bleach
- Horse Urine
- 10% Hydrochloric Acid
- 10% Sulphuric Acid
- 85.5% Phosphoric Acid

PERFECT FOR...



Automotive



Home



Marine



Recreational



Agriculture



Industrial



Commercial



COATING REGULATIONS

Coating regulations differ by country, industry and application. Inclusion of a specific application within this catalog is meant to demonstrate ability of this product to perform technically in that application, but does not mean that it has regulatory approval for this use in all different legislative regimes (for example having the relevant VOC for that specific use in every market). If you need specific advice regarding the local legislative frameworks for use of **RAPTOR** in any given application, please contact your U-POL representative.

APPLICATION & PROCEDURE GUIDE

RAPTOR is a textured coating suitable for use over the following properly prepared substrates: OEM paint, primed metal, primed aluminum, primed galvanized, fiberglass, SMC, wood, concrete and powder coat.

Process tools required: RAPTOR product, safety glasses, respirator, P80-P180 grit sandpaper, red scuff pads, RAPTOR application gun or professional vari-nozzle application gun (UP0726 or UP4880) or roller brush.



1. CLEAN SUBSTRATE

Remove all loose material. Clean and degrease surface. We recommend using U-POL SYSTEM 20 degreasers (UP2002 or UP2012).

2. PREPARE SUBSTRATE

Abrade surface with P80-P180 abrasive, use red scuff pad for difficult to abrade areas. Re-clean the surface. RAPTOR can be directly applied over painted surfaces that have been cleaned and abraded. We recommend using U-POL SYSTEM 20 degreasers (UP2002 or UP2012).



3. PRIME SURFACE

Spot prime any areas where bare metal has been exposed. Bare metal, aluminum or galvanized surfaces must be primed with a suitable primer such as RAPTOR Acid Etch Primer (UP5023), or RAPTOR Anti-Corrosive Epoxy Primer for optimum performance. Use RAPTOR Adhesion Promoter (UP5024) in hard to reach areas.

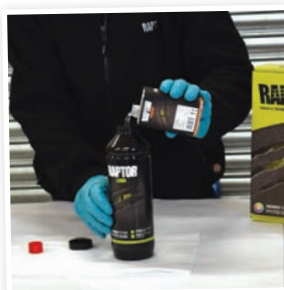
4. MIX RAPTOR

RAPTOR has a 3:1 mix ratio. Pour 240ml of the RAPTOR hardener into the pre-filled bottle of 710ml of RAPTOR coating or combine them at a 3 parts RAPTOR to 1 part hardener ratio in a separate container. For tinting, please consult the technical datasheet.



5. SHAKE

Shake bottle or stir (if mixing in separate container) for 2 minutes to thoroughly mix the product.



6. SHOOT

Attach application gun to bottle. Adjust supplied air pressure to 40-60psi (2.75-4.1 bar) depending on desired texture. At a distance of 18-59 in (45-150 cm), apply to the prepared surface in a sweeping motion to obtain desired texture.

Pot life: approximately 60 minutes.

We recommend using RAPTOR application guns (UP0726 or UP4880).

7. ADDITIONAL COATS

Two or three light coats are better than one heavy coat. If applying more than one coat, allow RAPTOR to flash 60 minutes between coats. If more than 5 hours between coats, allow it to set overnight, lightly abrade and apply additional coat(s).



8. TOP COATING

RAPTOR can be overpainted with most modern paint systems. Allow RAPTOR to dry for 24 hours, scuff with fine scuff pad, clean, apply top coat or clearcoat if desired. We recommend using SYSTEM 20 clearcoats (UP2882 or UP2872V).

9. DRYING TIMES @ 68°F (20°C)

Dry to touch: 1 hour. Light duty use: 2-3 days.
Heavy duty use: 7 days.



10. EQUIPMENT CLEAN UP

Clean gun, equipment and over spray with lacquer thinner or acetone before RAPTOR is fully cured.

RAPTOR TEXTURE APPLICATION

SMOOTH FINISH



First coat: Mix RAPTOR

3:1+15%, HVLP 1.7, 2 Bar (25 PSI) pressure at gun and allow 30-minute flash time

Second coat: 3:1+15%, HVLP 1.7, 2 Bar (25 PSI) pressure at gun and same - end at "gun"

STANDARD TEXTURE FINISH

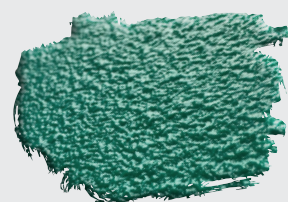


Standard texture through Application Gun (UP0726 and UP4880): Mix RAPTOR

4 Bar (58 PSI)

Distance from object 20 inches (50cm) 2 coats with an even sweeping motion

HEAVY TEXTURE FINISH



Coarse texture through Application Gun (UP0726 and UP4880): Mix RAPTOR

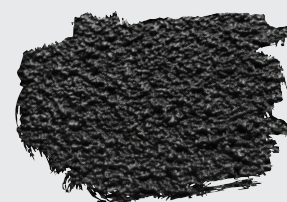
and allow to stand for 10 minutes

3 Bar (44 PSI)

Distance from object 20 inches (50 cm)

2 coats: 1 even sweeping motion, second dropping the coat over the first

SLIP-RESISTANT FINISH



Coarse texture through Application Gun (UP0726): Mix RAPTOR

and allow to stand for 10-minutes

3 Bar (44 PSI)

Distance from object 50cm

2 coats - 1st coat even sweeping motion, 2nd coat increase air pressure to 4 Bar (58 PSI) and distance to 29.5 in (75 cm) dropping the coat over the first – add a RAPTOR Traction on the last coat



FAQ

APPLICATION

Q: What size gun tip should I use to spray RAPTOR?

A: Depending on the texture desired, once reduced, RAPTOR can generally be applied with a nozzle set from about a 1.4 up to a 2.0. Once it is reduced to a maximum of 20% it is possible to spray it through a smaller nozzle set (1.2 - 1.3) however, the film build will be pretty thin and it may not have the same chip resistance that it does when applied with a larger nozzle set. In reality, it all depends on the look, finish and texture that you want to achieve.

Q: What PSI should I set my RAPTOR Application Gun to (UP0726)?

A: Typically, 40-60 psi (3-4 bar) is recommended. Higher or lower pressure can also be used, but it's recommended you spray a test panel first to make sure the texture is what you are looking for.

Q: How do you use automotive paint tape with RAPTOR?

A: Wait between 60-90 minutes after applying your final coat of RAPTOR before removing the tape.

Q: How many coats of RAPTOR can be applied?

A: The recommended RAPTOR application is 2-3 coats with a 60 minute flash time between coats. If further build is needed, it is recommended to carry this out in several applications. For instance, apply the first 2-3 coats, bake or allow 24 hours to dry and then apply another 2-3 coats, etc. The key is to allow as much solvent to evaporate from each layer before adding subsequent layers. If the process is carried out too fast, RAPTOR may remain soft and take longer to fully cure.

Q: How long do I need to wait to recoat RAPTOR after applied?

A: RAPTOR can generally be re-coated after 24 hours. Scuff it with a red scuff pad, clean with wax and grease remover, apply the next coat of RAPTOR.

Q: What if I need to touch up or repair my application?

A: Cured RAPTOR can easily be touched up. Just clean the surface, sand and featheredge a few inches into the surrounding area, re-clean, and mix and apply as usual. No need to prime again unless you sand down to bare metal. Remember, if it's been more than 5 hours since the last coat of RAPTOR has been applied, allow RAPTOR to cure for 24 hours, then lightly abrade and apply additional coat(s).

Q: How long do I need to wait before RAPTOR is exposed to rain or water?

A: Do not allow RAPTOR to come in contact with water for at least 72 hours.

Q: How thick should RAPTOR be per coat?

A: The average thickness for RAPTOR is 200-250 µm per coat. Applying 2 medium coats of RAPTOR is recommended. Measurements are approximate and are dependent on the application method.

Q: What area will RAPTOR cover?

A: One RAPTOR 1 US Gallon Kit will cover approximately 12 sq meters at recommended film build (3 sq meters / bottle).

Q: In what temperature range should RAPTOR be applied within?

A: It is not recommended for application below 40°F (5°C). When RAPTOR is applied at the lower temperatures, the dry and cure time is significantly extended.

Q: Can RAPTOR be dry baked?

A: Yes, 30 minutes at 140°F (60°C).

Q: Can RAPTOR be used on the undercarriage and engine compartment of my vehicle?

A: Yes, RAPTOR can be used for both.

MIX RATIO

Q: What is the mix ratio by volume and by weight?

A: Volume - 3 parts RAPTOR - 1 part hardener - 10% color.
B: 100g RAPTOR - 30g hardener and - up to 10g tint.
Refer to online technical datasheet for additional quantities.

Q: Can RAPTOR be thinned?

A: Yes, RAPTOR can be reduced up to 20% with a urethane grade reducer.

For helpful tips and tricks on how to apply **RAPTOR** and to find your nearest application centre visit, raptorcoatings.com



PREPARATION

Q: How do you prepare bare metal for a RAPTOR application?

A: Abrade surface with P80-P180 (P180 for aluminum) grit sandpaper and apply 1-2 coats of **RAPTOR** Acid Etch Primer (UP5023). Allow to dry for 15-20 minutes before applying **RAPTOR**. If **RAPTOR** Acid Etch Primer is not available, 2K DTM or Epoxy Primer (preferably **RAPTOR** Epoxy Primer) can be used to prime bare metal (follow top coat directions for primer).

Q: Can you apply RAPTOR to wheel rims?

A: Yes, **RAPTOR** can be applied to both steel and alloy wheels. The preparation is as follows: sand with P80-P180 grit, use **RAPTOR** Acid Etch Primer (UP5023) or Epoxy Primer over exposed bare metal, and apply.

Q: How do you prepare plastic for a RAPTOR application?

A: **RAPTOR** can be used on most plastic without much preparation. Abrade the plastic with P180-P240 grit sand paper or red scuf and then apply an adhesion promoter, like **RAPTOR** Adhesion Promoter (UP5024). Wait about 20 minutes before applying **RAPTOR**.

Q: How do you prepare wood and plywood for a RAPTOR application?

A: If the wood has been pre-treated or painted, clean the wood of any contaminants. If cleaned with water, allow to dry first. Lightly sand with P80 to 180 grit sand paper any painted areas. Once dry, apply **RAPTOR**.

Q: How do you prepare concrete for a RAPTOR application?

A: As long as the concrete is clean, dry, and free of oil, you can apply **RAPTOR** directly to concrete. If concrete is sealed, a rotary floor sander can be used to abrade surface. Any petroleum based surface contaminants should first be cleaned with a suitable cleaning solution to neutralize the contamination.

Q: How do you prepare fiberglass for a RAPTOR application?

A: Scuff the surface with P80 to P120 grit sandpaper and degrease before applying **RAPTOR**. For optimum adhesion, an adhesion promoter, like **RAPTOR** Adhesion Promoter (UP5024) can be used in areas that cannot be sanded.

Q: Can RAPTOR be applied on top of a basecoat?

A: Yes, it can be applied to both solvent and water borne basecoat. Follow basecoat manufacturer's drying times prior to over coating.

Q: How do you prepare OEM E-Coat for a RAPTOR application?

A: Clean the surface with wax and grease remover and scuff the surface with red / maroon scuff pad. Re-clean the surface before applying **RAPTOR**.

Q: How do you prepare powder coat for RAPTOR application?

A: Clean the surface with wax and grease remover and lightly sand with P180 grit sandpaper before applying **RAPTOR**.

Q: Can RAPTOR be applied over Sealant?

A: There are a large number of sealants on the market, of various different types and technologies. The only sealant recommended unreservedly for use with **RAPTOR** is U-POL Tigerseal, which has been thoroughly tested for compatibility in our laboratories.

Q: Can RAPTOR be used on a boat? Is it completely water resistant?

A: **RAPTOR** is a water resistant coating once fully cured and can be used for many marine applications. Let **RAPTOR** cure completely for approximately 72 hours before immersing in water.

RAPTOR will also hide a multitude of problems, like crazing, pitting and scratches.

Sand the crazed gel coat with P100-P120 grit sandpaper before applying **RAPTOR**. First, repair the damaged gel coat with FIBRAL (UP0716) or SMC bonding filler (UP0777 black or UP0779 white) to seal the surface.

Q: How do you prepare chrome for a RAPTOR application?

A: Good results can be obtained if one of the following is used, but note that chrome is not an "approved" substrate:
For radiator grills: Sand the surface as well as possible, apply two coats of **RAPTOR** Adhesion Promoter (UP5024), allow to dry then apply **RAPTOR**.

For more demanding substrates, such as bumpers: Sand the surface as well as possible, apply epoxy primer (following primers guidelines), then apply **RAPTOR**.

TINTING

Q: How do you tint RAPTOR?

A: Visit your local automotive paint distributor, and they can help you color match. **RAPTOR** is compatible with any solvent based color, including 2K acrylic solid color and mixed acrylic basecoats, and can be added up to 10% by volume (ask your paint supplier to leave out the binders if possible for best pigment density). NOTE: Acrylic basecoat toners tend to have high color strength so use sparingly (less than 10% tint by volume). **RAPTOR** cannot be used with water based, polyester, or enamel paints.

Q: Does the opaque color of tintable RAPTOR lighten up the tint color? How can I get a brilliant color?

A: For best color match results, tintable **RAPTOR** requires a solvent color. Various paint lines may have stronger or weaker toners so final color may vary. Ask your paint supplier to leave any binder or balancer out of the formulation if possible so it is pure pigment.

Q: Can tint be added to the black kits, for example, to make gray?

A: Yes, tint can be added to the black or white kits as well. If you're looking to match a color code, it may be hard to do this way. Suggested that you conduct a test spray out to determine if the color and look is acceptable prior to general application.

Q: Can you use metallic toners in RAPTOR?

A: Metallic toners can be used however, you may experience "metallic burying" and the **RAPTOR** may not have the exact look that you are attempting to match. Our suggestion is to conduct a test spray-out before committing to the whole project.

TECHNICAL PROPERTIES & CHEMICAL COMPOSITION

Q: What is the Shore Hardness of RAPTOR?

A: The typical Shore D Hardness Value for fully cured **RAPTOR** is 85.

Q: What is the maximum temperature RAPTOR can handle after applied?

A: 212°F (100°C). At sustained temperatures above 212°F (100°C), some softening could occur.

Q: Can RAPTOR be exposed to gasoline after applied?

A: **RAPTOR** can withstand some exposure to gasoline. If the area will be submerged in gasoline, **RAPTOR** should not be used, as there may be some surface softening from prolonged exposure.



FINISH

Q: How do you create a dull or less-glossy look?

A: Most paint manufacturers provide proprietary matting agents that are used in other 2K products, and these are suitable for use in **RAPTOR**. Follow the manufacturer's recommendations. Please note this may reduce **RAPTOR's** flexibility.

Q: What type of finish does RAPTOR have? Will it attract dirt?

A: **RAPTOR** dries as a hard satin gloss finish. It won't attract dirt and is easy to clean.

Q: Is RAPTOR skid resistant?

A: On its own, **RAPTOR** is not skid resistant, or non-slip. For a non-skid surface on walkways, mix **RAPTOR** Traction – Slip-Resistant Additive (UP4800) into to the final coat before applying.

Q: How do I get a smoother, less textured finish?

A: There are two ways to get a smoother finish. 1). Turn up the pressure on the gun. 2). Add thinner as per the technical datasheet instructions. For instance, you could use an HVLP gravity fed gun with a 1.6-2.0mm nozzle set up.

Add 15% urethane reducer when mixing **RAPTOR**. Set your gun at 29 psi (2 bar). At a distance of about 6 in (15 cm), spray the first coat as an even wet coat. After flashing, reduce the pressure and material flow to achieve a fine mist for the second coat.

Q: How do you paint over RAPTOR?

A: Allow **RAPTOR** to dry for 24 hours.

OTHER

Q: How can one 1 US Gallon Kit of RAPTOR cover more area than competitor truck bed liners?

A: A **RAPTOR** Kit has 4 bottles of sprayable product, where most competitors only provide around 2L of product in a kit. The **RAPTOR** Kit is designed so that one kit will cover an average truck bed.

Q: How long will RAPTOR last once applied to substrates?

A: The life of **RAPTOR** once applied can depend on application method, film build, quality of preparation and substrate. We have tested **RAPTOR** against other products in the market and have laboratory test data which proves better performance. When applied correctly, **RAPTOR** will last for years and is very easy to repair if necessary. It has excellent U.V. stability and will not fade. The **RAPTOR** Land Rover we have done in the UK was painted in 2015 and has travelled all over the UK on the road. It still looks as good as the day it was painted, with no defects.





DRIVING SURFACE PERFECTION™



Visit www.u-pol.com to learn more about **U-POL** products.

Plus you'll find other valuable information like Technical Data Sheets and Safety Data Sheets available to easily download.

Check out our YouTube channel for process videos and technical tips.

www.youtube.com/U-POLDSP

U-POL US, Inc., 1525 Valley Center Parkway, Suite 110, Bethlehem, PA 18017, USA

Tel: (610) 746-7081 Fax: (610) 743-8654 Email: us@u-polus.zendesk.com

U-POL is a registered trademark of U-POL Ltd ©2022.

UPOL-US-ENG (September 2024)