



DRIVING SURFACE PERFECTION™

# **AUTOMOTIVE REPAIR CATALOGUE**

**YOUR COMPLETE GUIDE TO  
BODYSHOP SOLUTIONS**

# CONTENTS

## **FILLERS**

4

**U-POL** Fillers: Smooth, durable solutions for flawless surface repair.

## **SPECIALITY FILLERS**

6

**U-POL** Specialty Fillers: Advanced solutions for precise, high-performance repairs.

## **AEROSOLS**

8

**U-POL** Aerosols: Versatile, high-performance coatings for fast, flawless finishes, with custom can filling machines available.

## **COATINGS**

10

**U-POL** Primers & Coatings: High-performance solutions for enhanced surface preparation and long-lasting protection.

## **THINNERS & PAINT ANCILLARIES**

12

**U-POL** Thinners & Paint Ancillaries: Essential products for optimal application, consistency, and finish quality.

## **ADHESIVES & SEALANTS, REFINISH ABRASIVES & PLASTIC REPAIR**

13

**U-POL** Adhesives, Sealants, Abrasives, and Plastic Repairs: Premium solutions designed for reliable bonding, smooth, consistent finishes, and long-lasting, high-performance repairs on a variety of surfaces.

## **RAPTOR COATINGS**

14

**RAPTOR** Coatings: Tough, durable protection for any surface, in any environment.



# U-POL - BUILT FOR PROFESSIONALS, TRUSTED WORLDWIDE

**U-POL** has a comprehensive range of fillers and coatings and we are uniquely positioned to deliver solutions developed, tested and approved for the modern bodyshop. We know your reputation matters and that's why **U-POL** is investing in future innovation - to help your team get it right first time, every time.



**U-POL** is a world leader in automotive refinishing with a wide range of products specialising in driving surface perfection including fillers, aerosols, coatings, adhesives and more.



Find out more



**RAPTOR** protects industrial surfaces in the harshest environments as well as the smaller surfaces we rely on every day. It's durable, tintable, looks great and lasts a long time.



Find out more



The **ISOPON** range, developed so enthusiasts can repair and restore their vehicles quickly and easily at home. Convenient solutions designed to encourage new and novice users to undertake repairs themselves.



Find out more



Experience the difference with industry-leading refinish products ranging from surface preparation to undercoats, basecoats, clearcoats, color-matching technologies and accessories.



Find out more

Product images are for reference only and not to scale.



## MICROFILL

Introducing a groundbreaking and innovative product designed to revolutionise your workflow. Microfill is a wipe-on pinhole eliminator and sealer and can be used over filled surfaces prior to priming to help reduce re-work.

Up to  
**30%**  
reduction of primer consumption



CODE	SIZE	DESCRIPTION	COLOUR	CTN
MICF/200	200ml Bag	MicroFill Pinhole Eliminator & Sealer	Dark Grey	10



## DOLPHIN® Body Fillers

U-POL's trusted range of body fillers – designed to deliver smooth, flawless repairs from start to finish, no matter the size of the job.

CODE	SIZE	DESCRIPTION	COLOUR	CTN
DOLBF/D	3L Tin	Dolphin Deep Body Filler	Pale Blue	4
DOLBF/M	3L Tin	Dolphin Medium Depth Body Filler	Blue	4



2%



15-20 mins



P80-P240



## DOLPHIN® 1K Stopper

U-POL's Dolphin 1K stopper is convenient and ready to use – no hardener required. Perfect for surface imperfections and pinholes, especially last minute situations.

CODE	SIZE	DESCRIPTION	COLOUR	CTN
DOLST/TU	200g Tube	Dolphin 1K Stopper	Green	6



15-20 mins  
Max 3 coats



## FANTASTIC™ Body Fillers

U-POL Fantastic™ Body Filler: Lightweight, easy to sand and ideal for medium depth repairs, delivering a smooth, pinhole-free finish.

CODE	SIZE	DESCRIPTION	COLOUR	CTN
FANT/BL	880ml Bag	Fantastic Body Filler	Light Brown	6
FANT/3	3L Tin	Fantastic Body Filler	Light Brown	4



2%



15-20 mins



P80-P240





## EASY™ Lightweight Body Fillers

U-POL Easy Fillers: Effortless application, smooth sanding, and a flawless finish for any repair job.

CODE	SIZE	DESCRIPTION	COLOUR	CTN
EASY/7	3L Tin	Easy 1 Deep Body Filler	Light Grey	3
EASY2/3L	3L Tin	Easy 2 Medium Body Filler	Cream	4
EASY3/1	1.1L Tin	Easy 3 Smooth Spreading Glaze	Gold	8



2%



15-20 mins



P80-P240



## SMOOTH 7™ Smooth Body Filler

U-POL Smooth 7: Perfect for deep repairs and for repairing large, deep, or uneven areas, offering excellent filling, smooth application and strong adhesion.

CODE	SIZE	DESCRIPTION	COLOUR	CTN
SM/7	3L Tin	Smooth 7 Body Filler	Light Grey	2



2%



15-20 mins



P80-P240



## FILLER APPLICATION ESSENTIALS

Designed to support a flawless finish, these essential tools make mixing and applying fillers quick, clean and precise.

CODE	SIZE	DESCRIPTION	COLOUR	CTN
ON/1	100 Sheet Pad	Onion Mixing Board	White	10
APL/3	3 applicators	Set of 3 Applicators	Various	20



## DOLPHIN® GLAZE AND SPEED GLAZE

U-POL's premium finishing glazes are perfect for fine repairs, delivering fast, flawless results, fill minor imperfections and sand to a smooth finish in minutes.

CODE	SIZE	DESCRIPTION	COLOUR	CTN
BAGDOL/1	440ml Bag	Dolphin Glaze*	Pale Green	10
BAGDOLSG/1	440ml Bag	Dolphin Speed Glaze**	Pale Blue	10



2%



\*15-20 mins  
\*\*8-10 mins



P180-P240

U-POL's Dolphin Glaze range:  
**FOR FAST, FLAWLESS RESULTS EVERY TIME!**



## FIBRAL LITE

U-POL FIBRAL LITE speciality fillers offer strong, durable fibreglass repairs with lightweight and easy-to-sand options for a smooth, reinforced finish.

CODE	SIZE	DESCRIPTION	COLOUR	CTN
FIBL/3	3L Tin	Fibral Lite Fibreglass Filler	Yellow	4



3%



15-20 mins



P80-P240



## FIBRAL® Fibreglass Filler

U-POL FIBRAL speciality fillers offer strong, durable fibreglass repairs with lightweight and easy-to-sand options for a smooth, reinforced finish.

CODE	SIZE	DESCRIPTION	COLOUR	CTN
FIB/BL	880ml Bag	Fibral Fibreglass Filler	Yellow	6
FIB/2	900ml Tin	Fibral Fibreglass Filler	Yellow	8
DIS/FIB	1.28L Dispenser	Fibral Fibreglass Filler	Yellow	6



3%



15-20 mins



P80-P180



## U-POL B™ Fibreglass Bridging Compound

U-POL B Glass Fibre Repair Paste is a durable, reinforced filler designed for strong, long-lasting repairs on metal and fibreglass surfaces.

CODE	SIZE	DESCRIPTION	COLOUR	CTN
UPOLB/2	1L Tin	U-POL B Glass Fibre Repair Paste	Yellow Clear	8
UPOLB/4	1.85L Tin	U-POL B Glass Fibre Repair Paste	Yellow Clear	4



4%



15-20 mins



P80-P240



## PLAST X™ FILLER Highly Flexible Body Filler For Plastics

PLAST X 6 Plastic Filler is a flexible, high-performance filler designed specifically for fast, smooth repairs on plastic surfaces.

CODE	SIZE	DESCRIPTION	COLOUR	CTN
PLAS/6	600ml Tin	PLAST X 6 Plastic Filler	Black	6



2%



30 mins



P120-P240



## U-POL™ D Aluminium Reinforced Body Filler

U-POL D FINE Metallic Polyester Filler is a premium, smooth-finishing filler ideal for fine surface repairs with a modern metallic finish.

CODE	SIZE	DESCRIPTION	COLOUR	CTN
UPOLD/2	1.1L Tin	U-POL D Fine Metallic Polyester Filler	Silver Grey	8



2%



15-20 mins



P80-P240



## SMC™ Carbon Fibre Reinforced Filler

SMC Carbon Fibre Reinforced Filler is a strong, durable solution designed for high-strength repairs on SMC, GRP, and other rigid surfaces.

CODE	SIZE	DESCRIPTION	COLOUR	CTN
SMCB/2	1.1L Tin	SMC Carbon Fibre Reinforced Filler	Black	8
SMCW/2	1.1L Tin	SMC Carbon Fibre Reinforced Filler	White	8



2%



15-20 mins



P80-P240



## REFACE™ Sprayable Filler

Reface Sprayable Filler is a fast, easy solution for flawless surface repair with a smooth, professional finish.

CODE	SIZE	DESCRIPTION	COLOUR	CTN
UPOL/SF2	2.5L Tin	Reface Sprayable Filler	White	4
HAR/SF	50ml Bottle	Reface Sprayable Filler Hardener	Colourless	6



3% by weight  
5% by volume



30 mins @ 60°C  
2-3 hrs @ 20°C



P180 - P240



## BPO HARDENER For Polyester Body Fillers

The essential hardener for achieving fast, smooth results when used with U-POL fillers.

CODE	SIZE	DESCRIPTION	COLOUR	CTN
HRED/L	40g Sachet	BPO Hardener	Red	20
HWHITE/L	40g Sachet	BPO Hardener	White	20
HAR/DISP	50g Tube	BPO Hardener	White	18



U-POL's premium aerosol range:  
**ACHIEVE PROFESSIONAL RESULTS**  
wherever you need it

## PREMIUM AEROSOLS

High-performance solutions designed for professional results across a wide range of applications.



\*1-2 coats @ 25cm  
\*\*@ 25cm  
\*\*\*2-3 coats @ 25cm



(1) 60 mins  
(2) 10-20 mins  
(3) 15-30 mins  
(4) 20-30 mins  
(5) 3-4 hours



^Wipe #6 only

CODE	SIZE	DESCRIPTION	COLOUR	CTN
CLEAR/AL	450ml Aerosol	CLEAR #1 UV Resistant Clearcoat* <sup>1</sup>	Colourless	6
WELDC/AL	450ml Aerosol	WELD #2 Copper Rich Primer* <sup>2</sup>	Metallic Copper	6
WELD/AL	450ml Aerosol	WELD #2 Zinc Rich Primer* <sup>2</sup>	Metallic Copper	6
SPOT/AL	450ml Aerosol	SPOT #3 Universal Spot Primer* <sup>3</sup>	Grey	6
GRIP/AL	450ml Aerosol	GRIP #4 Adhesion Promoter* <sup>2</sup>	Colourless	6
HIGHG/AL	450ml Aerosol	HIGH #5 High Build Primer Filler* <sup>1</sup>	Grey	6
HIGHDG/AL	450ml Aerosol	HIGH #5 High Build Primer Filler* <sup>1</sup>	Dark Grey	6
HIGHB/AL	450ml Aerosol	HIGH #5 High Build Primer Filler* <sup>1</sup>	Black	6
HIGHW/AL	450ml Aerosol	HIGH #5 High Build Primer Filler* <sup>1</sup>	White	6
WIPE/AL	450ml Aerosol	WIPE #6 Solvent-based Degreaser** <sup>^</sup>	Colourless	6
GUIDE/AL	450ml Aerosol	GUIDE #7 Guide Coat*	Black	6
ACID/AL	450ml Aerosol	ACID #8 Etch Primer* <sup>2</sup>	Grey	6
BLEND/AL	450ml Aerosol	BLEND #9 Fade Out***	Colourless	6
GUARD/AL	450ml Aerosol	GUARD #10 Gravi-Guard Stone Chip Protector* <sup>5</sup>	Black	6
TRIMGB/AL	450ml Aerosol	TRIM #11 High Build Topcoat* <sup>4</sup>	Gloss Black	6
TRIMMB/AL	450ml Aerosol	TRIM #11 High Build Topcoat* <sup>4</sup>	Matt Black	6
TRIMSB/AL	450ml Aerosol	TRIM #11 High Build Topcoat* <sup>4</sup>	Satin Black	6
TRIMGW/AL	450ml Aerosol	TRIM #11 High Build Topcoat* <sup>4</sup>	Gloss White	6
TRIMSLW/AL	450ml Aerosol	TRIM #11 High Build Topcoat* <sup>4</sup>	Silver Wheels	6
TRIMSTW/AL	450ml Aerosol	TRIM #11 High Build Topcoat* <sup>4</sup>	Steel Wheels	6



To find out more information about our aerosols range, visit [www.u-pol.com](http://www.u-pol.com)





## POWER CAN™ AEROSOLS

Heavy-duty performance with high delivery for fast, reliable application on larger jobs.

CODE	SIZE	DESCRIPTION	COLOUR	CTN
PCEP/AL	500ml Aerosol	POWER CAN™ Etch Primer	Dark Grey	12
PCPG/AL	500ml Aerosol	POWER CAN™ High Build Primer	Grey	12
PCLC/AL	500ml Aerosol	POWER CAN™ Clearcoat	Colourless	12
PCSB/AL	500ml Aerosol	POWER CAN™ Top Coat	Satin Black	12
PCMB/AL	500ml Aerosol	POWER CAN™ Top Coat	Matt Black	12
PCGB/AL	500ml Aerosol	POWER CAN™ Top Coat	Gloss Black	12
PCGW/AL	500ml Aerosol	POWER CAN™ Top Coat	Gloss White	12
PCAS/AL	500ml Aerosol	POWER CAN™ Top Coat	Silver Wheels	12
PCSS/AL	500ml Aerosol	POWER CAN™ Top Coat	Steel Wheels	12



1-2 coats @ 25cm



30 mins



## CUSTOM CAN™ Aerosol Filling System

A fast, efficient way to create custom aerosol solutions, delivering professional results with ease.

CODE	SIZE	DESCRIPTION	COLOUR	CTN
CCUP/AL	400ml Aerosol	Custom Can Solvent-based	Colourless	12
CCWP/AL	400ml Aerosol	Custom Can Water-based	Colourless	12
CCFOUP/AL	400ml Aerosol	Custom Can Fill-One Solvent-based	Colourless	12
CCFOWP/AL	400ml Aerosol	Custom Can Fill-One Water-based	Colourless	12



1-2 coats @ 25cm



Dependent on supplied paint

We offer  
**CUSTOM CAN  
FILLING MACHINES**  
tailored to your specific needs



## PLAST X™ AEROSOLS Plastic Bumper Repair Aerosols

A quick and effective solution for restoring damaged bumpers, ensuring a smooth, professional finish.

CODE	SIZE	DESCRIPTION	COLOUR	CTN
PLAS/2	400ml Aerosol	PLAST X 2 Plastic Adhesion Promoter* <sup>1</sup>	Clear	9
PLAS/3	400ml Aerosol	PLAST X 3 Primer Filler* <sup>1</sup>	Grey	9
PLAS/4F	400ml Aerosol	PLAST X 4 Texture Coat - Fine** <sup>2</sup>	Black	9
PLAS/5MG	400ml Aerosol	PLAST X 5 Colour Coat** <sup>3</sup>	Medium Grey	9
PLAS/5DG	400ml Aerosol	PLAST X 5 Colour Coat** <sup>3</sup>	Dark Grey	9
PLAS/5B	400ml Aerosol	PLAST X 5 Colour Coat** <sup>3</sup>	Black	9



\*1 coat @ 20cm

\*\*1-2 coats @ 25cm

\*\*\*1-2 coats @ 30cm



(1) 30 mins

(2) 10-15 mins

(3) 60 mins



# SYSTEM 20 SUPERIOR HS CLEARCOAT

Advanced protection and a flawless finish for automotive and industrial applications.

CODE	SIZE	DESCRIPTION	COLOUR	CTN
S2080/1	1L Tin	SYSTEM 20 Superior HS Clearcoat (2:1)	Colourless	6
S2080/5	5L Tin	SYSTEM 20 Superior HS Clearcoat (2:1)	Colourless	2



2:1



2 coats


30 mins @ 60°C  
12-14 hrs @ 20°C

## SYSTEM 20 CLEARCOATS

Delivering a high-performance finish with durability, clarity, and a flawless shine every time.

CODE	SIZE	DESCRIPTION	COLOUR	CTN
S2081/1	1L Tin	SYSTEM 20 Brilliant HS Clearcoat (2:1)* <sup>1</sup>	Colourless	6
S2081/5	5L Tin	SYSTEM 20 Brilliant HS Clearcoat (2:1)* <sup>1</sup>	Colourless	2
S2081SR/1	1L Tin	SYSTEM 20 Crystal Clear Scratch Resistant HS Clearcoat (2:1)* <sup>1</sup>	Colourless	6
S2081SR/5	5L Tin	SYSTEM 20 Crystal Clear Scratch Resistant HS Clearcoat (2:1)* <sup>1</sup>	Colourless	2
S2086/5	5L Tin	SYSTEM 20 Superfast HS Clearcoat (3:1)** <sup>2</sup>	Colourless	2
S2090/5	5L Tin	SYSTEM 20 Fast Scratch Resistant Clearcoat (3:1)* <sup>2</sup>	Colourless	2
S2085/5	5L Tin	SYSTEM 20 1K Acrylic Smart Clear UV Resistant Clearcoat	Colourless	2



\*2:1

\*\*3:1



2-3 coats


(1) 2-3 coats 30 mins @  
60°C 12-14 hrs @ 20°C  
(2) Through dry  
@ 20°C 2-3 hrs /  
@ 60°C 15 mins


## OTHER PRIMERS

CODE	SIZE	DESCRIPTION	COLOUR	CTN
ACID/1	1L Tin	ACID #8 1K Etch Primer* <sup>1</sup>	Grey	6
Z182/AL	450ml Aerosol	Isopon Zinc 182 Rust Inhibiting Primer Aerosol <sup>2</sup> ^	Grey	12
Z182/M	1L Tin	Isopon Zinc 182 Anti Rust Coating <sup>2</sup> ^	Grey	6
Z182/2.5	2.5L Tin	Isopon Zinc 182 Anti Rust Coating <sup>2</sup> ^	Grey	4



\*ACID #8 only


\*ACID #8 only  
1-2 coats

(1) 10-20 mins  
@ 20°C  
(2) 24 hrs

^Isopon Zinc  
182 only  
P400-P600


## SPECIALITY COATINGS

Engineered for precision and performance, delivering expert results for every specialist job.

CODE	SIZE	DESCRIPTION	COLOUR	CTN
BAR/1	1L Tin	BARCOAT™ Quick Drying Isolator* <sup>1</sup>	Grey	6
GS/1	1L Tin	GREY STRIPE™ Brushable Seam Sealer <sup>2</sup>	Grey	6


\*BARCOAT only  
1 coat

\*BARCOAT only  
1.3-1.4mm

(1) 1 hr  
(2) 6-10 mins  
(touch dry)  
7-8 hrs  
(through dry)


To find out more information about our coatings range, visit [www.u-pol.com](http://www.u-pol.com)



## SYSTEM 20 HARDENERS

Precision-engineered for fast curing and enhanced durability in automotive and industrial coatings.

CODE	SIZE	DESCRIPTION	COLOUR	CTN
S2032/M	500ml Tin	SYSTEM 20 Standard Hardener	Colourless	6
S2032/1	1L Tin	SYSTEM 20 Standard Hardener	Colourless	6
S2032/25	2.5L Tin	SYSTEM 20 Standard Hardener	Colourless	4
S2032/5	5L Tin	SYSTEM 20 Standard Hardener	Colourless	2
S2030/SM	250ml Tin	SYSTEM 20 Fast Hardener	Colourless	12
S2030/M	500ml Tin	SYSTEM 20 Fast Hardener	Colourless	6
S2030/1	1L Tin	SYSTEM 20 Fast Hardener	Colourless	6
S2030/25	2.5L Tin	SYSTEM 20 Fast Hardener	Colourless	4
S2031/M	500ml Tin	SYSTEM 20 Extra Fast Hardener	Colourless	6
S2031/1	1L Tin	SYSTEM 20 Extra Fast Hardener	Colourless	6
S2031/25	2.5L Tin	SYSTEM 20 Extra Fast Hardener	Colourless	4
S2033/M	500ml Tin	SYSTEM 20 Slow Hardener	Colourless	6
S2033/1	1L Tin	SYSTEM 20 Slow Hardener	Colourless	6
S2033/25	2.5L Tin	SYSTEM 20 Slow Hardener	Colourless	4



## SYSTEM 20 PRIMERS

Superior adhesion and surface preparation for a smooth, long-lasting finish in automotive and industrial applications.

CODE	SIZE	DESCRIPTION	COLOUR	CTN
S2021G/1	1L Tin	SYSTEM 20 UHS High Build Primer (5:1)**2	Grey	2
S2021G/3	3L Tin	SYSTEM 20 UHS High Build Primer (5:1)**2	Grey	2
S2021G/5	5L Tin	SYSTEM 20 UHS High Build Primer (5:1)**2	Grey	2
S2025/1	1L Tin	SYSTEM 20 High Build Primer (4:1)*1	Grey	6
S2025/3T	3L Tin	SYSTEM 20 High Build Primer (4:1)*1	Grey	2
S2025/4	4L Tin	SYSTEM 20 High Build Primer (4:1)*1	Grey	2
S2025B/1	1L Tin	SYSTEM 20 High Build Primer (4:1)*1	Black	6
S2025B/4	4L Tin	SYSTEM 20 High Build Primer (4:1)*1	Black	2
S2025W/1	1L Tin	SYSTEM 20 High Build Primer (4:1)*1	White	6
S2025W/4	4L Tin	SYSTEM 20 High Build Primer (4:1)*1	White	2



\*4:1  
\*\*5:1



2-3 coats



(1) 30 mins @ 60°C  
3-4 hrs @ 20°C  
(2) 30 mins @ 60°C  
2-3 hrs @ 20°C



## MAXIMUM

A premium 2K clearcoat system, engineered for fast application, superior flow and a flawless high-gloss finish.

CODE	SIZE	DESCRIPTION	COLOUR	CTN
MXMCL/5	5L Tin	MAXIMUM 2:1 Clearcoat*	Colourless	2
MXMH/25	2.5L Tin	MAXIMUM Standard Hardener	Colourless	4
MXMFH/25	2.5L Tin	MAXIMUM Fast Hardener	Colourless	4
MXMSH/25	2.5L Tin	MAXIMUM Slow Hardener	Colourless	4



\*Clearcoat only  
2:1



\*Clearcoat only  
2 coats



\*Clearcoat only  
60 mins @ 20°C



## SYSTEM 20 THINNERS

Optimised for perfect viscosity, seamless application, and a flawless finish in automotive and industrial coatings.

CODE	SIZE	DESCRIPTION	COLOUR	CTN
S2044/1	1L Tin	SYSTEM 20 Fast Drying Universal Thinner	Colourless	6
S2044/5	5L Tin	SYSTEM 20 Fast Drying Universal Thinner	Colourless	2
S2045/1	1L Tin	SYSTEM 20 Standard Universal Thinner	Colourless	6
S2045/5	5L Tin	SYSTEM 20 Standard Universal Thinner	Colourless	2
S2046/5	5L Tin	SYSTEM 20 Slow Drying Universal Thinner	Colourless	2



## SYSTEM 20 PAINT ANCILLARIES

Essential solutions for seamless application, durability, and professional-quality finishes.

CODE	SIZE	DESCRIPTION	COLOUR	CTN
ROC/S	250ml Bottle	SYSTEM 20 Rocket Paint Accelerator	Colourless	10
S20ROC/M	500ml Bottle	SYSTEM 20 Rocket Paint Accelerator	Colourless	6
S20FISH/S	250ml Bottle	SYSTEM 20 Fish Eye Eliminator	Colourless	10
S2003/AL	600 ml Aerosol	SYSTEM 20 Plastic Primer Adhesion Promotor Aerosol	Light Yellow	6
S2003/1	1L Tin	SYSTEM 20 Plastic Primer Adhesion Promotor	Light Yellow	6
S2000/5	5L Container	SYSTEM 20 Water-based Degreaser	Colourless	2
S2001/5	5L Tin	SYSTEM 20 Solvent-based Fast Drying Degreaser	Colourless	2
S2002/5	5L Tin	SYSTEM 20 Solvent-based Slow Drying Degreaser	Colourless	2



## GRAVITEX PLUS® HS Stone Chip Protector

A tough, durable stone chip protector that provides excellent coverage and long-lasting protection for underbody and lower panels.

CODE	SIZE	DESCRIPTION	COLOUR	CTN
GRA/NB1	1L Bottle	GRAVITEX PLUS	Black	12
GRA/GG1	1L Bottle	GRAVITEX PLUS	Grey	12
GRA/BW1	1L Bottle	GRAVITEX PLUS	White	12



1-2 coats



4-6 hrs



## ADHESIVES, SEALANTS & PLASTIC REPAIR



### TIGERSEAL™

#### Polyurethane Sealant and Adhesive

Tigerseal adhesives & sealants provide high-performance bonding and sealing solutions for durable, professional results.



P80-P180



30-60 mins  
(Skin Time)

CODE	SIZE	DESCRIPTION	COLOUR	CTN
TIG/NB	310ml Cartridge	TIGERSEAL PU Adhesive & Sealant	Black	12
TIG/BW	310ml Cartridge	TIGERSEAL PU Adhesive & Sealant	White	12
TIG/GG	310ml Cartridge	TIGERSEAL PU Adhesive & Sealant	Grey	12



### PLASTIKIT

#### For Professional Resin & Glass Fibre Repair

Strong, flexible solutions for seamless and durable plastic restoration.

CODE	SIZE	DESCRIPTION	COLOUR	CTN
RE/1	1L Tin	Plastikit Resin	Brown	5
RE/2.5	2.5L Tin	Plastikit Resin	Brown	2
CAT/2	20ml Bottle	Plastikit Hardener	Colourless	6
CAT/5	50ml Bottle	Plastikit Hardener	Colourless	6
PK1	—	Repair Kit	—	2
FIBRE/5	5m <sup>2</sup>	Matting	White	1

### MAXIMUM ABRASIVES

Precision-engineered for fast, efficient sanding and a flawless finish.



CODE	PRODUCT	DESCRIPTION	COLOUR	CTN
ABD7/VP80	P80 Grit	Latex paper disk P80 Paper 7 Hole	Beige	100
ABD7/VP120	P120 Grit	Latex paper disk P120 Paper 7 Hole	Beige	100
ABD7/VP150	P150 Grit	Latex paper disk P150 Paper 7 Hole	Beige	100
ABD7/VP180	P180 Grit	Latex paper disk P180 Paper 7 Hole	Beige	100
ABD7/VP240	P240 Grit	Latex paper disk P240 Paper 7 Hole	Beige	100
ABD7/VP320	P320 Grit	Latex paper disk P320 Paper 7 Hole	Beige	100
ABD7/VP400	P400 Grit	Latex paper disk P400 Paper 7 Hole	Beige	100
ABD7/VP500	P500 Grit	Latex paper disk P500 Paper 7 Hole	Beige	100
ABD7/VP600	P600 Grit	Latex paper disk P600 Paper 7 Hole	Beige	100
ABD7/VP800	P800 Grit	Latex paper disk P800 Paper 7 Hole	Beige	100
ABD8/VP1000	P1000 Grit	Premium film disk P1000 Paper 7 Hole	Green	50
ABD8/VP1200	P1200 Grit	Premium film disk P1200 Paper 7 Hole	Green	50
ABD8/VP1500	P1500 Grit	Premium film disk P1500 Paper 7 Hole	Green	50

To find out more information about our adhesives, sealants & plastic repair range, visit [www.u-pol.com](http://www.u-pol.com)



## FLAMEPROOF



A professional quality flameproof paint, ideal for use on exhaust manifolds, headers, exhaust systems and other areas that require protection from very high heat. RAPTOR Flameproof is based on advanced ceramic technology and high heat-resistant pigments that withstand temperatures up to 1000°C and is 5x tougher than ordinary paints. Once fully cured it provides superior protection from heat, oil and other automotive fluids. It's easy to use and dries fast to give an attractive, smooth finish with excellent adhesion that will not blister, flake, crack or peel. Suitable for use on all types of primed metals including steel and alloys.

CODE	SIZE	DESCRIPTION
RFLPG/AL	336ml (295g) Aerosol	Primer Grey
RFLSC/AL	361ml (295g) Aerosol	Satin Clear
RFLFB/AL	338ml (295g) Aerosol	Flat Black
RFLFR/AL	352ml (295g) Aerosol	Flat Red



## WHEEL PAINT

A professional quality wheel paint, ideal for renewing and extending the life of worn or damaged wheels. RAPTOR Wheel Paint's advanced formula resists temperatures up to 120°C and is 5x tougher than ordinary paints, to provide superior protection from impact, heat, stone chips, brake dust and corrosion. It's easy to use and dries fast to give an attractive, smooth finish with excellent adhesion that resists fading from the sun. Suitable for use on all types of primed metal wheels including steel, aluminium and alloys.

CODE	SIZE	DESCRIPTION
RWPGGB/AL	378ml (295g) Aerosol	Gloss Black
RWPSB/AL	378ml (295g) Aerosol	Satin Black
RWPSV/AL	364ml (295g) Aerosol	Silver
RWPGC/AL	365ml (295g) Aerosol	Gloss Clear



## ROLL BAR & CHASSIS

A professional quality paint, ideal for use on roll bars and chassis or any vehicle surface that needs additional protection from impact, abrasion, UV, corrosion and water damage. RAPTOR Roll Bar & Chassis' advanced formula resists temperatures up to 120°C and is 5x tougher than ordinary paints. It dries fast to give an attractive, smooth finish that has superior adhesion and resists fading from the sun. It's also self-priming, so can be used direct to most prepared metal without the need for a primer.

CODE	SIZE	DESCRIPTION
RRBGB/AL	366ml (295g) Aerosol	Gloss Black
RRBSB/AL	366ml (295g) Aerosol	Satin Black



## ENGINE ENAMEL

A professional quality engine enamel, ideal for use on engine blocks, engine accessories and other surfaces in the engine compartment. RAPTOR Engine Enamel contains ceramic resins that resist temperatures up to 300°C and is 5x tougher than ordinary paints to provide superior protection from heat, oil and other automotive fluids. It's easy to use and dries fast to give an attractive, smooth finish with excellent adhesion that will not blister, flake, crack or peel. Suitable for use on all types of primed metals (steel, aluminium and alloys).

CODE	SIZE	DESCRIPTION
REEPG/AL	355ml (295g) Aerosol	Primer Grey
REEBR/AL	363ml (295g) Aerosol	Bright Red
REEGB/AL	364ml (295g) Aerosol	Gloss Black
REESB/AL	364ml (295g) Aerosol	Satin Black
REEFB/AL	363ml (295g) Aerosol	Flat Black
REEGC/AL	364ml (295g) Aerosol	Gloss Clear



## CALIPER ENAMEL

A professional quality enamel, ideal for customising and extending the life of brake calipers. RAPTOR Caliper Enamel contains ceramic resins that resist temperatures up to 500°C and is 5x tougher than ordinary paints, to provide superior protection from impact, heat, brake dust, automotive fluids and corrosion. It's easy to use and dries fast to give an attractive, smooth finish with excellent adhesion that will not blister, flake, crack or peel. It's also self-priming, so can be used direct to most prepared metals without the need for a primer.

CODE	SIZE	DESCRIPTION
RCESB/AL	360ml (295g) Aerosol	Satin Black
RCERR/AL	357ml (295g) Aerosol	Real Red



## RAPTOR KITS

RAPTOR kits are ideal for any size application. Suitable to be used with spray guns, roller kits, brush and aerosol applications.

CODE	SIZE	DESCRIPTION
RLB/S1	1-Bottle Kit	Black
RLT/S1	1-Bottle Kit	Tintable
RLB/S4	4-Bottle Kit	Black
RLW/S4	4-Bottle Kit	White
RLT/S4	4-Bottle Kit	Tintable



## 5L RAPTOR

The 5L RAPTOR tins are ideal for large areas such as trailers, floors, heavy equipment and full oversprays.

CODE	SIZE	DESCRIPTION
RLB/5	5L Tin	Black
RLT/5	5L Tin	Tintable
RLH/5	5L Tin	Hardener



## 2K AEROSOL

The RAPTOR 2K Aerosol offers a fast, easy way to apply RAPTOR without compromising performance, no spray equipment necessary. The durability of RAPTOR with the convenience of an aerosol. Ideal for spot repairs and small jobs (typical coverage is 1.35 m<sup>2</sup> per can).

CODE	SIZE	DESCRIPTION
RLB/AL	400ml Aerosol	Black
RLW/AL	400ml Aerosol	White





## MULTI-USE PROTECTIVE COATING 1K AEROSOL

RAPTOR Multi-Use Protective Coating is an easy to use 1K aerosol that gives a durable, abrasion resistant finish, with excellent adhesive to a wide range of materials. Ideal for automotive touch ups and trim areas as well protecting many other surfaces and items around the home.

CODE	SIZE	DESCRIPTION
RMUB/AL	450ml Aerosol	Black
RMUW/AL	450ml Aerosol	White



## ANTI-CORROSIVE EPOXY PRIMER 2K AEROSOL

The RAPTOR Anti-Corrosive Epoxy Primer is a 2K high performance primer aerosol specifically designed to be used under RAPTOR Protective Coating to further extend the protective and anticorrosive properties of RAPTOR. The advanced resin technology in RAPTOR Anti-Corrosive Epoxy Primer improves adhesion to bare metal and most other prepared surfaces. It contains a blend of anti-corrosive additives to inhibit rust and corrosion.

CODE	SIZE	DESCRIPTION
REP/AL	400ml Aerosol	Beige



## ANTI-CORROSIVE EPOXY PRIMER

The RAPTOR Anti-Corrosive Epoxy Primer is a 2K high performance primer, specifically designed to be used under RAPTOR protective coating. It contains a blend of anti-corrosive additives to help inhibit rust and corrosion and has excellent salt spray resistance\*. RAPTOR Anti-Corrosive Epoxy Primer's advanced resin technology improves adhesion to bare metal and most other prepared surfaces, and promotes intercoat performance to further extend the life of RAPTOR protective coating.

CODE	SIZE	DESCRIPTION
REP/1	1L Tin	Grey
REP/3	3L Tin	Grey
REPH/500	0.5L Tin	Hardener
REPH/1.5	1.5L Tin	Hardener

\*Test completed at >1000 hours according to ASTM protocols (B117) at an independent laboratory.



## ACID ETCH PRIMER

Phosphoric acid etch formula promotes paint adhesion to difficult substrates, like galvanized steel and aluminium. Ideal for rub throughs in primer prior to application of colour and new bare metal panels.

CODE	SIZE	DESCRIPTION
RPTPEP/AL	450ml Aerosol	Grey



## ADHESION PROMOTER

Promotes paint adhesion to most automotive surfaces, like plastics, aluminium, galvanized metal, zinc, painted surfaces, fibreglass and even bodyfillers. Replaces the need to abrade surfaces in hard-to-sand areas, like under hoods and deck lids.

CODE	SIZE	DESCRIPTION
RPTAP/AL	450ml Aerosol	Clear



## ACCESSORIES

U-POL offers a complete line of accessory products to prepare, apply and upgrade your RAPTOR application.

CODE	SIZE	DESCRIPTION
GUN/VN	—	Professional Vari-Nozzle Application Gun
GUN/1	—	Standard Application Gun
RLTR/SM	200g Box	Slip Resistant Additive Traction - Clear
ROLLER/PK	—	Roller and Tray Kit



## REASONS TO CHOOSE RAPTOR

1

### IT'S REALLY EASY TO APPLY

Simply **fill, shake and shoot** or **roller** on if you prefer.



2

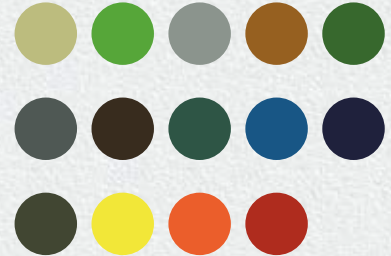
### CAN BE APPLIED TO ALMOST ANY SURFACE

Including metal, plastic, concrete and wood.



3

### CAN BE TINTED TO ANY COLOUR



4

### TOUGHNESS COMES IN AN AEROSOL



5

### RAPTOR IS WATERPROOF



6

### RAPTOR IS CHEMICAL PROOF AND RUST PROOF



7

### U.V. RESISTANT SO IT WON'T FADE OR 'CHALK' IN THE SUN

AFTER 8 YEARS IN THE SUN...



RAPTOR

COMPETITOR 1

COMPETITOR 2

COMPETITOR 3

8

### SLIP RESISTANT ADDITIVE

The use of RAPTOR Traction with RAPTOR produces a slipresistant surface as defined by BS 7976-2 and ASTM E303-93.







DRIVING SURFACE PERFECTION™

**U-POL Limited**

Christchurch House, Embankment,  
Wellingborough, NN8 1LD

**Tel:** 01933837398

**Email:** [uk.sales@u-pol.com](mailto:uk.sales@u-pol.com)

**[www.u-pol.com](http://www.u-pol.com)**

U-POL is a registered trademark  
of U-POL Ltd ©2025.

June 2025