

RAPTOR HIGH HEAT

RAPTOR HIGH HEAT AEROSOLS A NEW BREED OF RAPTOR



120°C

300°C

500°C

1000°C

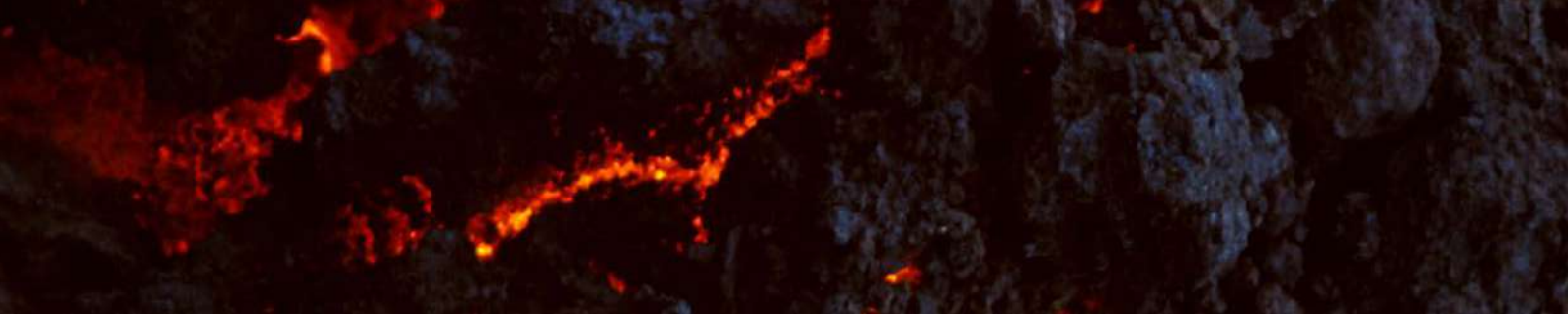
www.raptorcoatings.com



NEW RAPTOR HIGH TEMPERATURE PAINT 5X TOUGHER THAN ORDINARY PAINTS



It's not just paint. It's RAPTOR High Heat protective coating. Engineered for groundbreaking durability and uncompromised heat resistance. RAPTOR High Heat Aerosols use advanced ceramic technology formulated to be 5x tougher than standard automotive paints, withstanding heat up to 1000°C. It provides superior colour stability and adhesion to substrates exposed to high-temperature environments.



Protects the toughest vehicles

- Trucks
- 4 x 4

Protects against

- Scratches & Abrasions
- Chemicals
- Water, UV Damage & Heat

Protects every surface

- Truck Bed
- Roll Bar & Chassis
- Rocker Panel
- Wheels

RAPTOR WHEEL PAINT



A professional quality wheel paint, ideal for renewing and extending the life of worn or damaged wheels. RAPTOR Wheel Paint's advanced formula resists temperatures up to 120°C and is 5x tougher than ordinary paints, to provide superior protection from impact, heat, stone chips, brake dust and corrosion. It's easy to use and dries fast to give an attractive, smooth finish with excellent adhesion that resists fading from the sun. Suitable for use on all types of primed metal wheels including steel, aluminium and alloys.

- Heat Resistant up to 120°C
- Chemically resistant to oils and traffic film
- Protects against stone chips and brake dust
- 5x Tougher than ordinary paints
- Fast drying – touch dry in 30 mins
- Clog Free Spot Nozzle – ideal for 3D surfaces

Part Number	Description	Colour	Heat Resistant to	Ctn
RWPG/AL	378ml (295g) Aerosol	Gloss Black	120°C	12
RWPS/AL	378ml (295g) Aerosol	Satin Black	120°C	12
RWPSV/AL	364ml (295g) Aerosol	Silver	120°C	12
RWPGC/AL	365ml (295g) Aerosol	Gloss Clear	120°C	12

RAPTOR ROLL BAR & CHASSIS



A professional quality paint, ideal for use on roll bars and chassis or any vehicle surface that needs additional protection from impact, abrasion, UV, corrosion and water damage. RAPTOR Roll Bar & Chassis' advanced formula resists temperatures up to 120°C and is 5x tougher than ordinary paints. It dries fast to give an attractive, smooth finish that has superior adhesion and resists fading from the sun. It's also self-priming, so can be used direct to most prepared metal without the need for a primer.

- Heat Resistant up to 120°C
- Superior UV resistance – resists fading from the sun
- 5x Tougher than ordinary paints
- Direct to metal – no need for a primer
- Clog Free Fan Nozzle – gives a smooth finish on larger areas

Part Number	Description	Colour	Heat Resistant to	Ctn
RRBGB/AL	366ml (295g) Aerosol	Gloss Black	120°C	12
RRBSB/AL	366ml (295g) Aerosol	Satin Black	120°C	12

RAPTOR ENGINE ENAMEL



A professional quality engine enamel, ideal for use on engine blocks, engine accessories and other surfaces in the engine compartment. RAPTOR Engine Enamel contains ceramic resins that resist temperatures up to 300°C and is 5x tougher than ordinary paints to provide superior protection from heat, oil and other automotive fluids. It's easy to use and dries fast to give an attractive, smooth finish with excellent adhesion that will not blister, flake, crack or peel. Suitable for use on all types of primed metals (steel, aluminium and alloys).

- Ceramic technology – Heat Resistant up to 300°C (retains gloss)
- Superior corrosion resistance
- Excellent adhesion – won't blister, flake, crack or peel
- 5x Tougher than ordinary paints
- Fast drying – touch dry in 30 mins
- Clog Free Spot Nozzle – ideal for 3D surfaces

Part Number	Description	Colour	Heat Resistant to	Ctn
REEPG/AL	355ml (295g) Aerosol	Primer Grey	300°C	12
REEBR/AL	363ml (295g) Aerosol	Bright Red	300°C	12
REEGB/AL	364ml (295g) Aerosol	Gloss Black	300°C	12
REESB/AL	364ml (295g) Aerosol	Satin Black	300°C	12
REEFB/AL	363ml (295g) Aerosol	Flat Black	300°C	12
REEGC/AL	364ml (295g) Aerosol	Gloss Clear	300°C	12

RAPTOR CALIPER ENAMEL



A professional quality enamel, ideal for customising and extending the life of brake calipers. RAPTOR Caliper Enamel contains ceramic resins that resist temperatures up to 500°C and is 5x tougher than ordinary paints, to provide superior protection from impact, heat, brake dust, automotive fluids and corrosion. It's easy to use and dries fast to give an attractive, smooth finish with excellent adhesion that will not blister, flake, crack or peel. It's also self-priming, so can be used direct to most prepared metals without the need for a primer.

- Advanced Ceramic Technology – Heat Resistant up to 500°C
- Achieves high gloss finish
- Superior corrosion resistance
- 5x Tougher than ordinary paints
- Direct to metal – no need for a primer
- Clog Free Spot Nozzle – ideal for coating brake calipers

Part Number	Description	Colour	Heat Resistant to	Ctn
RCESB/AL	360ml (295g) Aerosol	Satin Black	500°C	12
RCERR/AL	357ml (295g) Aerosol	Real Red	500°C	12

RAPTOR HIGH HEAT

RAPTOR FLAMEPROOF

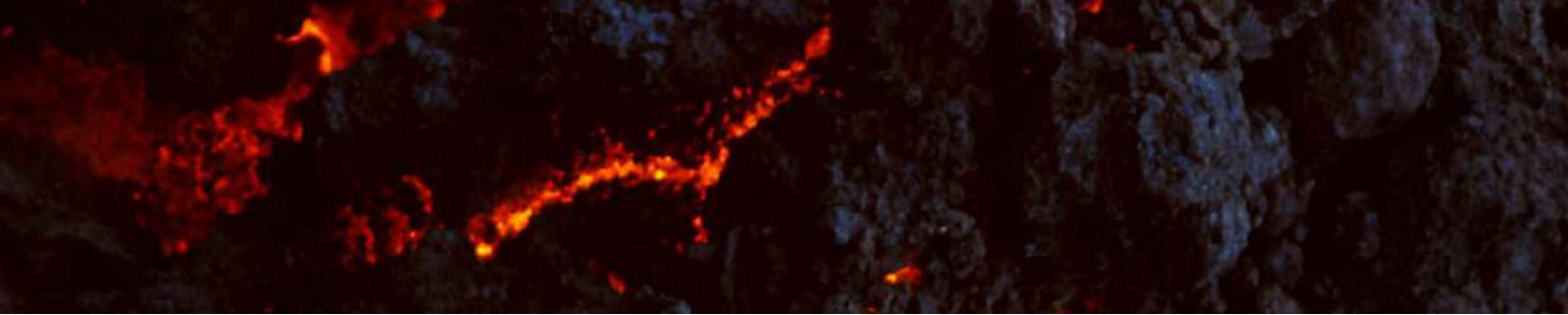


A professional quality flameproof paint, ideal for use on exhaust manifolds, headers, exhaust systems and other areas that require protection from very high heat. RAPTOR Flameproof is based on advanced ceramic technology and high heat-resistant pigments that withstand temperatures up to 1000°C and is 5x tougher than ordinary paints. Once fully cured it provides superior protection from heat, oil and other automotive fluids. It's easy to use and dries fast to give an attractive, smooth finish with excellent adhesion that will not blister, flake, crack or peel. Suitable for use on all types of primed metals including steel and alloys.

- Advanced Ceramic Technology (incorporates advanced heat-resistant pigment technology) – Heat Resistant up to 1000°C
- Superior protection from heat, oil and other automotive fluids
- Excellent adhesion – won't blister, flake, crack or peel
- Clog Free Spot Nozzle – ideal for 3D surfaces
- 5x Tougher than ordinary paints

Part Number	Description	Colour	Heat Resistant to	Ctn
RFLPG/AL	336ml (295g) Aerosol	Primer Grey	1000°C	12
RFLSC/AL	361 ml (295g) Aerosol	Satin Clear	1000°C	12
RFLFB/AL	338ml (295g) Aerosol	Flat Black	1000°C	12
RFLFR/AL	352ml (295g) Aerosol	Flat Red	1000°C	12





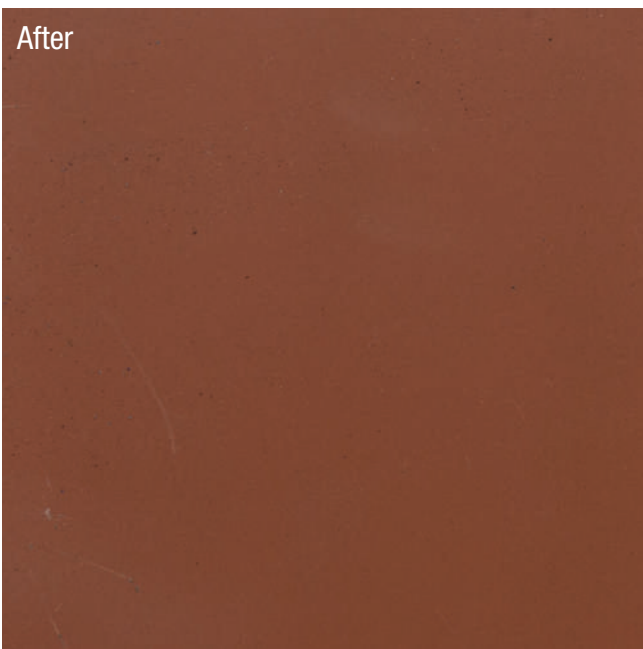
RAPTOR FLAMEPROOF PERFORMANCE VS KEY COMPETITOR

RAPTOR Red Flameproof 1000°C

Before



After

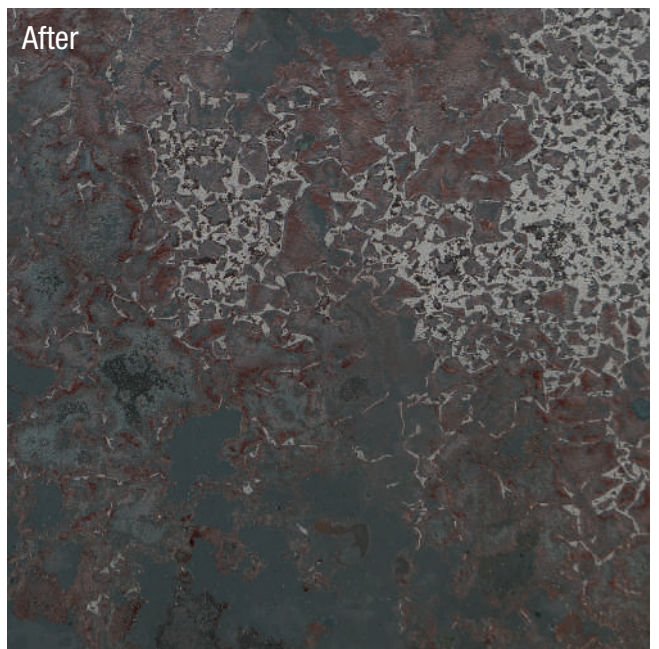


Competitor Red Flameproof 1000°C

Before



After





U-POL Limited

Christchurch House, Embankment,
Wellingborough, NN8 1LD
Tel: +44 (0)20 8492 5900
Fax: +44 (0)20 8181 6911
Email: uk.sales@u-pol.com

U-POL and RAPTOR are registered trademarks of U-POL Ltd ©2025.

For more information on RAPTOR High Heat Aerosols and other RAPTOR products visit www.raptorcoatings.com

