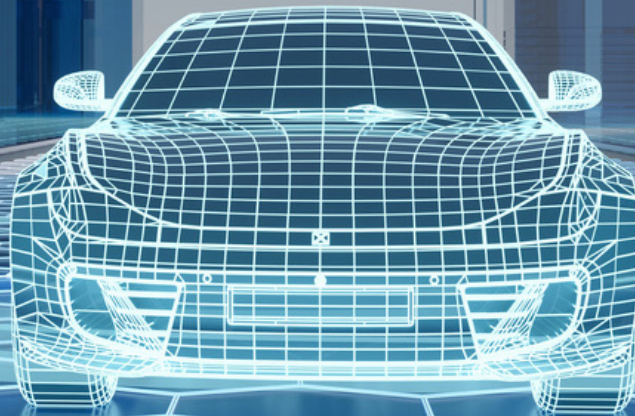




DRIVING SURFACE PERFECTION™



THE PERFECT FINISH NEEDS A PERFECT START  
Introducing Tectium™





DRIVING SURFACE PERFECTION™



## OPTIMIZE REPAIR PERFORMANCE BY STARTING WITH THE RIGHT FOUNDATION.

U-POL OFFERS A PREMIUM RANGE OF INNOVATIVE, TECHNICALLY ADVANCED BODY FILLERS FOR ANY TYPE OF REPAIR TO SATISFY BODYSHOP DEMAND FOR QUALITY AND PERFORMANCE.

Engineered for performance, **Tectium™ body filler** and **Tectium™ Elite body filler** deliver repair efficiency that's **more efficient** than market-leading brands in North America.

These advanced formulas enable technicians to move through the repair process faster without compromising quality – **ready to prime in half the time**, with effortless application and sanding.

Every repair starts with confidence.

### Using Tectium™ products means:

- Faster cycle times – more cars repaired per day
- Consistent, high-quality finishes with superior adhesion
- Easy-to-use formulas that reduce fatigue and rework

Tectium™ fillers offer a **distinct feel like leading fillers in the North American market** – intentionally designed with European technology to meet the demands of high production collision centers.

For more information on Tectium body fillers and other U-POL products visit

[WWW.U-POL.COM](http://WWW.U-POL.COM)



# TECTIUM™ ELITE FILLER

This premium two-part light weight polyester filler has an advanced formulation allowing you to skip the glazing step and go right to priming and painting within just 20 minutes.

- Super creamy formula
- Smooth, easy application
- Tack-free finish
- Superior sanding
  - 2X more stock removal
  - Tack free formula with reduced clogging
- Superior adhesion to all substrates including galvanized



2% BPO hardener by weight\*



Apply a smooth film immediately after mixing, avoid air bubbles



Once mixed, 4-6 mins @ 68°F



15-20 mins @ 68°F I.R. Distance 50-80cm @ 176°F, 5 mins



Initial sanding P80-P120 / Final sanding P180-P240

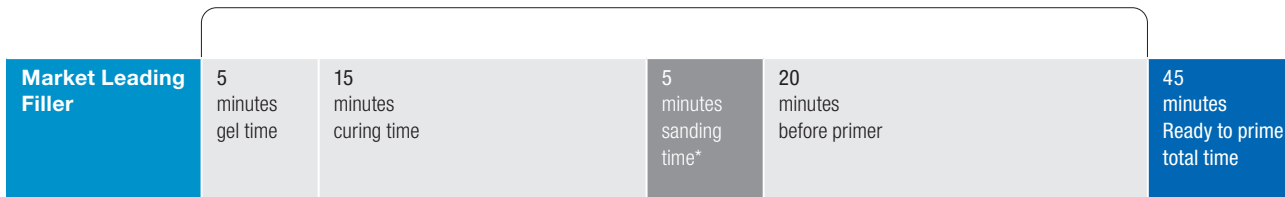
\*Percentage of BPO hardener can vary depending on working temperatures. Refer to TDS for details.

CODE	SIZE	COLOUR	CTN
UP0644	0.8 US Gallon Tin	Pale Violet	4
UP0634	1 US Quart Tin	Pale Violet	8



**TECTIUM™ ELITE FILLER is ready to prime in half the time (typically 25 mins less per repair)**

Market Leading Premium Filler = 11 repairs per day\*\*



Tectium Elite Filler = 24 repairs per day\*\*



## MORE THAN 2X FASTER

- Faster curing
- Faster and easier sanding
- Quicker turnaround
- Improved productivity

\* Typical sanding times

\*\* Typical 8 hour working day

## TECTIUM™ FILLER

**This high quality two-part light weight polyester filler has a super creamy consistency with smooth easy application.**

- Super creamy formula
- Smooth, easy application
- Tack-free finish
- Excellent feather edging
  - No shrink back
  - Flawless finish
- Easy to sand
- Superior adhesion to all substrates including galvanized



2% BPO hardener by weight\*



Apply a smooth film immediately after mixing, avoid air bubbles



Once mixed, 4-6 mins @ 68°F



15-20 mins @ 68°F  
I.R. Distance 50-80cm @ 176°F, 5 mins



Initial sanding P80-P120 / Final sanding P180-P240

\*Percentage of BPO hardener can vary depending on working temperatures. Refer to TDS for details.

CODE	SIZE	COLOUR	CTN
UP0643	0.8 US Gallon Tin	Gold	4
UP0633	1 US Quart Tin	Gold	8

## TECTIUM™ GLAZE

**This high-performance finishing glaze has a super fast-curing profile and is specifically formulated to correct minor imperfections such as pinholes, scratches and stone chips.**

- Exceptionally smooth and ultra fine formula
- Self-levelling
- Excellent flow properties
- Exceptional adhesion to multiple substrates
- 3X Faster Curing profile
- Snap cure technology
- Solvent impervious in <20 minutes



2% BPO hardener by weight\*



Apply a smooth film immediately after mixing, avoid air bubbles



Once mixed, 4-6 mins @ 68°F



6-8 mins @ 68°F  
I.R. Distance 50-80cm @ 176°F, 5 mins



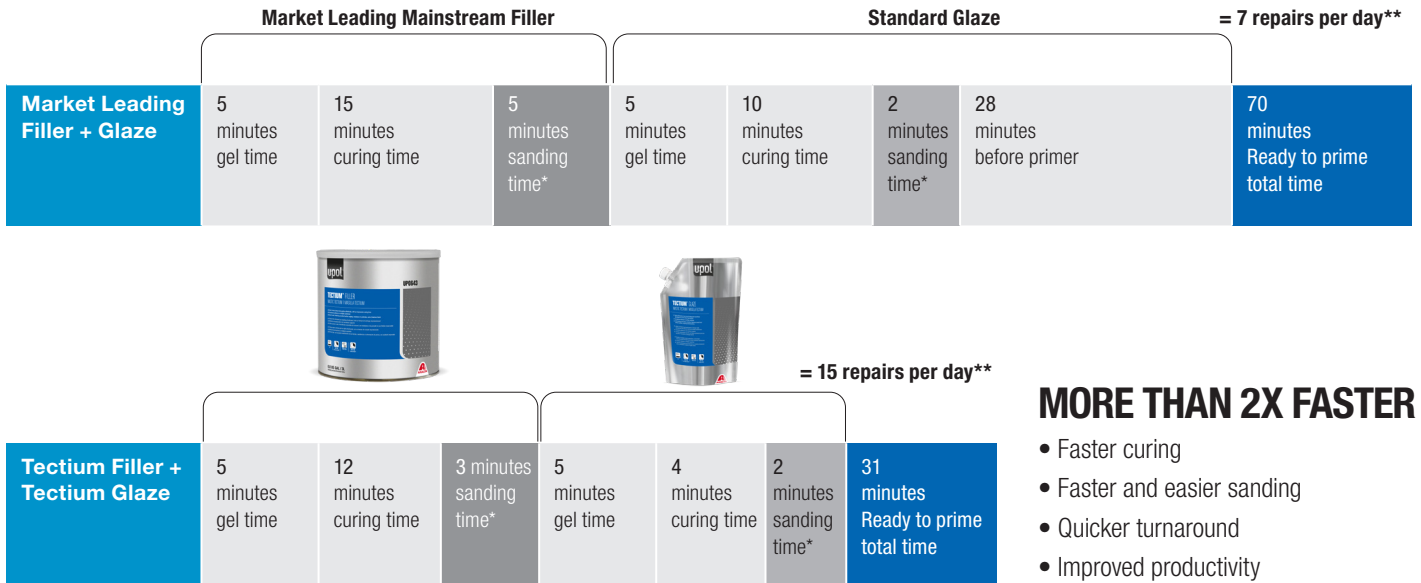
Initial sanding P180 / Final sanding P180-P240

\*Percentage of BPO hardener can vary depending on working temperatures. Refer to TDS for details.

CODE	SIZE	COLOUR	CTN
UP0645	29.7 oz Bag	Blue	6

# TECTIUM™ FILLER + TECTIUM™ GLAZE PROCESS

Ready to prime in half the time (typically 39 mins less per repair)



## MORE THAN 2X FASTER

- Faster curing
- Faster and easier sanding
- Quicker turnaround
- Improved productivity

\* Typical sanding times

\*\* Typical 8 hour working day



## MICROFILL

**Pinhole eliminator and adhesion promoter that reduces rework and primer consumption by up to 30%. It improves adhesion between the surface and primer.**

- Easy-to-use wipe on 1K paste designed to eliminate micro pinholes and scratches after sanding
- Seals the repair surface prior to priming
- Reduces primer consumption by up to 30%
- Reduces re-work
- Promotes adhesion between surface and primer
- Ready to overpaint in 15 mins @ 68°F, no sanding required
- Free from microplastics



Apply to surface with lint free cloth. Remove any excess and buff surface, leaving a fine film over the repair area.



15 mins @ 68°F, then prime in accordance with paint manufacturers recommendations.



No sanding required

Refer to TDS for detailed application and usage instructions.

CODE	SIZE	COLOUR	CTN
UP0686	6.7 oz Bag	Dark Gray	10

## PROCESS FOR MEDIUM REPAIRS

Use Tectium™ Body Filler



### Prepare substrate

Clean with solvent based degreaser and abrade surface with P80 grit paper. Reclean.



### Mix Tectium™ Body Filler with hardener

2% mixing ratio (@68°F). Avoid air bubbles.



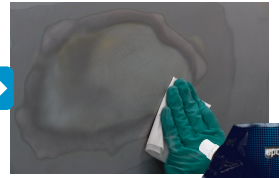
### Apply Tectium™ Body Filler

Apply smooth film immediately after mixing. 4-6 mins Gel time (@68°F).



### Sand surface

After 15-20 mins @ 68°F. Initial sanding use P80, final sanding use P180-P240 paper.



### For best results apply MicroFill

Wipe on using a lint free cloth. Remove excess. Allow to dry for 15 mins (@68°F) before applying primer.



### Alternatively mix Tectium™ Elite Body Filler with hardener

2% mixing ratio (@68°F). Avoid air bubbles.

### Alternatively apply Tectium™ Elite Body Filler

Apply smooth film immediately after mixing. 4-6 mins Gel time (@68°F).

## PROCESS FOR FINE REPAIRS

Use Tectium™ Glaze



### Prepare substrate

Clean with solvent based degreaser and abrade surface with P80-P180 grit paper. Reclean.



### Mix Tectium™ Glaze with hardener

2% mixing ratio (@68°F). Avoid air bubbles.



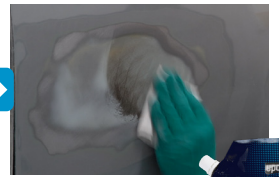
### Apply Tectium™ Glaze

Apply smooth film immediately after mixing. 4-6 mins Gel time (@68°F).



### Sand surface

After 8-10 mins @68°F. Use P180-P240 paper.



### For best results apply MicroFill

Wipe on using a lint free cloth. Remove excess. Allow to dry for 15 mins (@68°F) before applying primer.



## ABOUT U-POL

**U-POL is a world leader in automotive refinishing products specialising in body fillers, coatings, aerosols, adhesives and paint related products.**

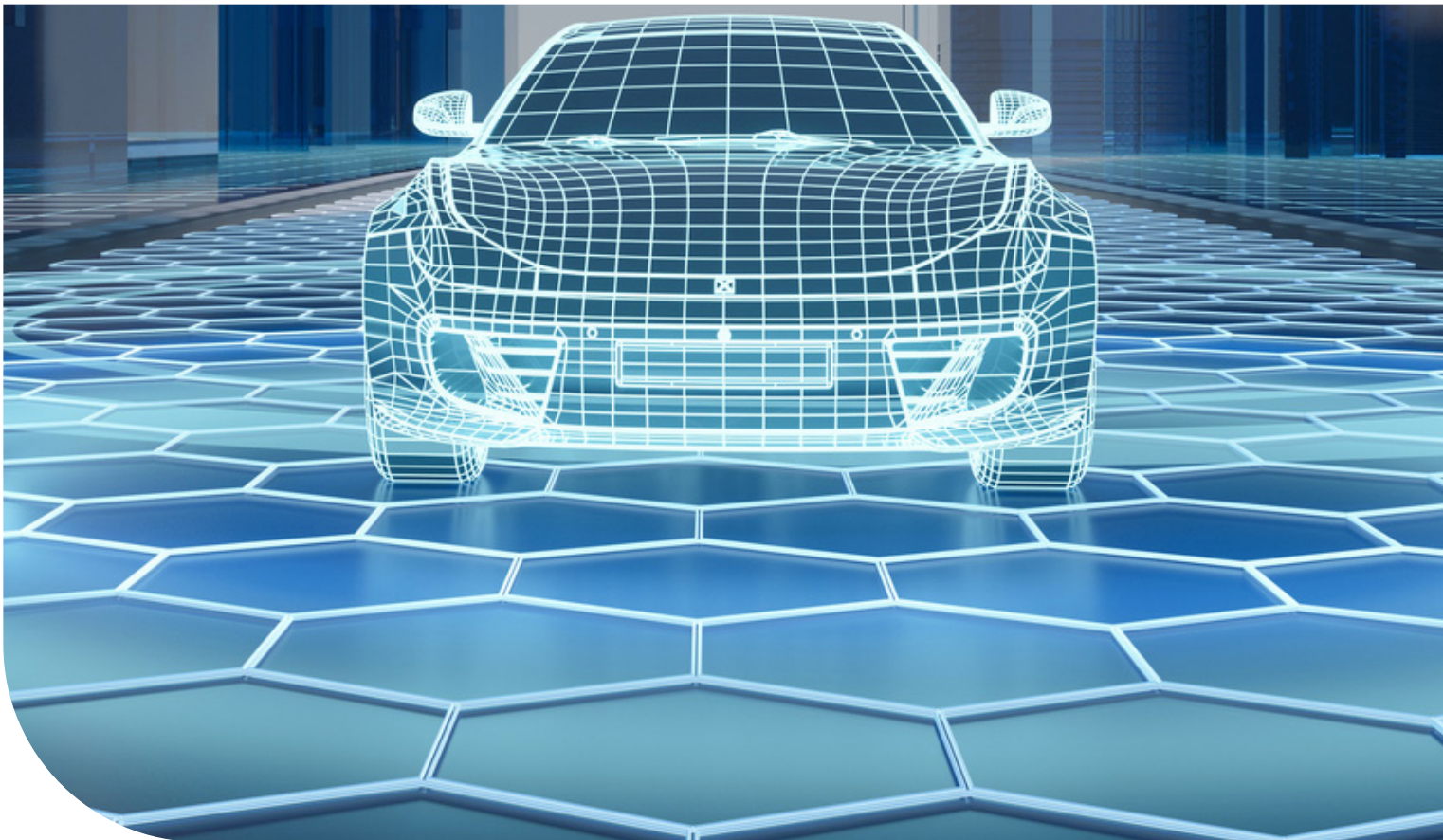
Recognised globally with sales in over 100 countries, U-POL is committed to consistently providing customers with high quality products to improve bodyshop efficiency and ensure a great result first time, every time.

Our heritage and experience of over 75 years in the industry, coupled with our continued investment in state-of-the-art manufacturing facilities and reputation for innovation, ensures that your U-POL experience is nothing less than world class.

U-POL products are designed and developed for today's professional technicians.

**U-POL products improve bodyshop efficiency and ensure a great result first time, every time.**

- Innovative products developed by experts for experts
- Perfect for any type of repair – deep, medium, fine or specific applications
- So convenient – easy to apply, easy to sand





AN AXALTA COATING SYSTEMS BRAND

U-POL US, Inc.  
1525 Valley Center Parkway, Suite 110  
Bethlehem, PA 18017  
Tel: (610) 746-7081  
Fax: (610) 743-8654  
Email: [us@u-polus.zendesk.com](mailto:us@u-polus.zendesk.com)

For more information on Tectium™ body fillers and other U-POL products visit [www.u-pol.com](http://www.u-pol.com)



U-POL and Tectium are registered trademarks of U-POL Ltd ©2025

