

**Staying Connected**

**Building Awareness**

**Developing Knowledge**



**1** **Fillers, Putties & Glazes**

**2** **Primers & Clears**

**3** **RAPTOR Part I**

**4** **RAPTOR Part II**

**5** **Premium Aerosols**

**6** **Custom Cans**

# Module 3: RAPTOR



DRIVING SURFACE PERFECTION



Fillers



Primers and Clears



RAPTOR



Aerosols

# RAPTOR

## The Products



DRIVING SURFACE PERFECTION



### Surface Preparation



### Protection



### Accessories



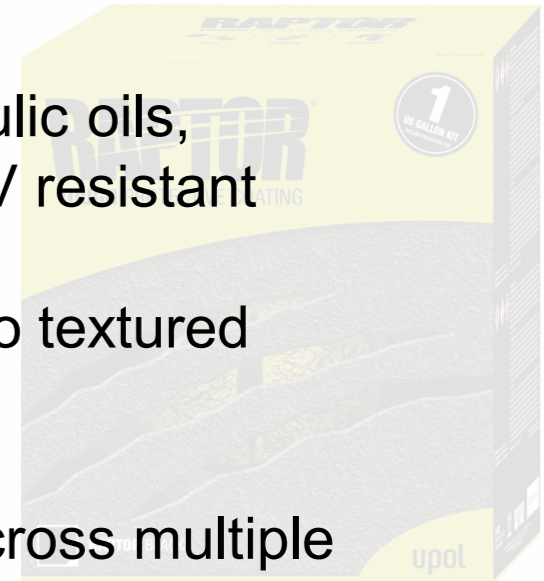
### Additives

# RAPTOR

## What is it?



- It's a tough, durable, 2K coating for use as a truck bed-liner or as a full exterior protective coating that can be tinted any color
- Resistant to gas, diesel, hydraulic oils, acids, animal urines - highly UV resistant
- Multiple finishes from smooth to textured over a wide range of surfaces
- Provides superior protection across multiple industries - 4x4, automotive customization, commercial, agricultural and construction machinery



# RAPTOR

## Pack sizes available



DRIVING SURFACE PERFECTION



Quart Kit



Gallon Kit



2k Aerosol

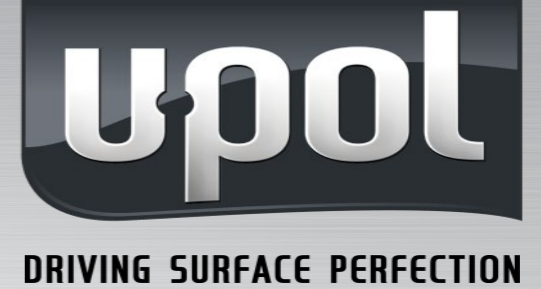


5 Gal Kit



72 Gal Kit

# RAPTOR Surface Prep



**Proper Preparation Is Key**  
Raptor bonds to practically any properly prepared substrate.

Creating solid foundations for the perfect finish is essential:

- Raptor Adhesion Promoter  
for flexible plastics and hard to sand areas
- Raptor Etch Primer  
small exposed bare metal
- Raptor Epoxy Primer  
larger bare metal areas



# RAPTOR 2k Aerosol



Same 2K Raptor in a convenient aerosol delivery system.

The toughest protective coating available in an aerosol pack.

Available in 7 colors

14.5 sq ft coverage – perfect for:

- Repair existing Raptor
- Bumper texturing
- Rockers / Trim panels
- Wheel coating
- Small component coating

High output tip = multiple textures





# RAPTOR Accessories



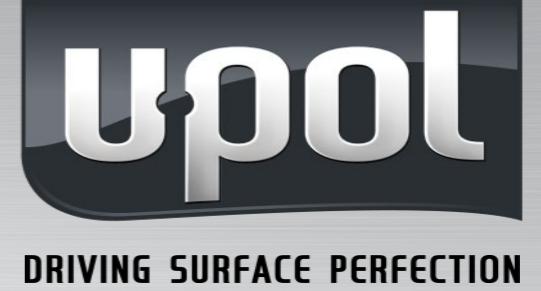
Looking for more than Black or White:

- 15 color tint pouches, or...
- Custom tint with auto paints
- Non-Skid Traction Additive



UP4854 WHITE / BLANCO 2K	UP4857 BEIGE / BEIGE 2K	UP4860 BLUE / AZUL 2K	UP4863 GREEN / VERDE 2K	UP4866 YELLOW / AMARILLO 2K
UP4855 LIGHT GRAY / GRIS CLARO 2K	UP4858 LIGHT BROWN / MARRÓN CLARO 2K	UP4861 NAVY BLUE / AZUL MARINO 2K	UP4864 PINE GREEN / VERDE PINO 2K	UP4867 ORANGE / NARANJA 2K
UP4856 BASALT GRAY / GRIS BASALTO 2K	UP4859 SEPIA BROWN / MARRÓN SEPIA 2K	UP4862 LIGHT GREEN / VERDE CLARO 2K	UP4865 OLIVE GREEN / VERDE OLIVA 2K	UP4868 FLAME RED / ROJO FUEGO 2K

# RAPTOR Application Options



**UP0726  
Standard Gun**



**UP4880 Vari-  
Nozzle Pro Gun**



**UP5028 Rollers**



**Disposable Liners  
& HVLP Guns**

# RAPTOR Roll-On What's in the box



DRIVING SURFACE PERFECTION

4 bottles of Raptor  
1 quart hardener  
1 measuring cup

Optional items:  
Application gun and  
UP5028 Roller Pack



# RAPTOR Truck Bed Examples



# RAPTOR Truck Bed Examples



# RAPTOR Full Body Examples



DRIVING SURFACE PERFECTION



# RAPTOR Full Body Examples



DRIVING SURFACE PERFECTION



# RAPTOR Full Body Examples



DRIVING SURFACE PERFECTION





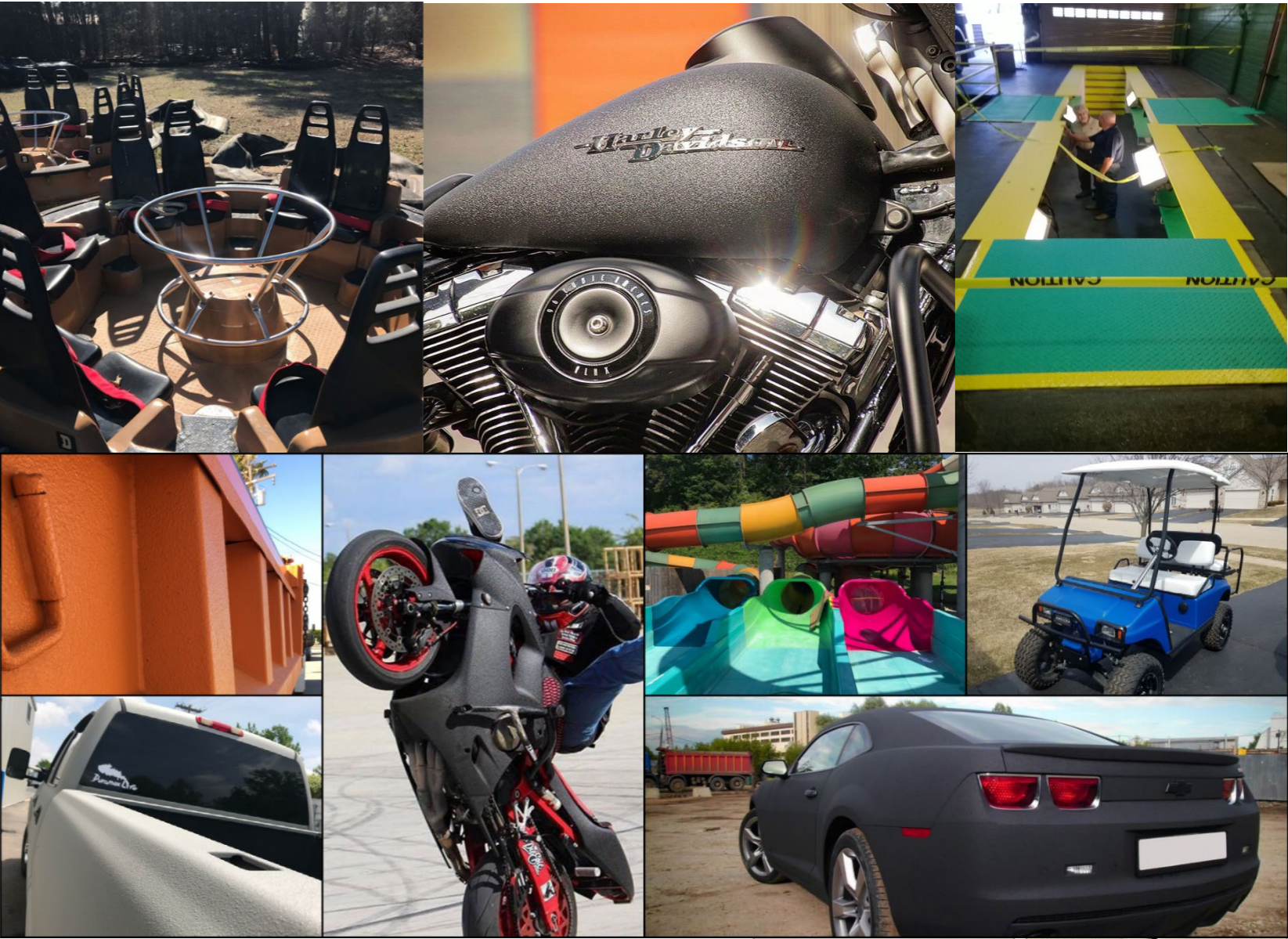
# RAPTOR Full Body Examples



# RAPTOR Trim & Underbody Examples



# RAPTOR Non-Traditional Automotive Applications



# RAPTOR Summary



- Easy to use - Fill / Shake / Shoot
- 3 Versions: black, white, tintable
- 3 VOC levels: NR, 2.6, 1.7
- Prep aerosols
- 2K Aerosols
- Tint w/ U-POL tints or auto paints
- Spray, brush or roll
- Auto / Commercial / Industrial

